



OPEN ACCESS

ORIGINAL ARTICLE

Sustained effect of couples' HIV counselling and testing on risk reduction among Zambian HIV serodiscordant couples

Kristin M Wall,^{1,2} William Kilembe,¹ Bellington Vwalika,^{1,3} Lisa B Haddad,^{1,4} Shabir Lakhi,^{1,3} Udodirim Onwubiko,² Naw Htee Khu,¹ Ilene Brill,^{1,5} Roy Chavuma,^{1,3} Cheswa Vwalika,¹ Lawrence Mwananyanda,¹ Elwyn Chomba,^{1,6} Joseph Mulenga,¹ Amanda Tichacek,¹ Susan Allen¹

¹Rwanda Zambia HIV Research Group, Department of Pathology and Laboratory Medicine, School of Medicine and Hubert Department of Global Health, Rollins School of Public Health, Emory University, Atlanta, Georgia, USA

²Department of Epidemiology, Rollins School of Public Health, Laney Graduate School, Emory University, Atlanta, Georgia, USA

³Department of Gynaecology and Obstetrics (BV), Internal Medicine (SL) and Surgery (RC), School of Medicine, University of Zambia, Lusaka, Zambia

⁴Department of Gynaecology and Obstetrics, Emory University, School of Medicine, Atlanta, Georgia, USA

⁵Department of Epidemiology, Ryals School of Public Health, University of Alabama at Birmingham, Birmingham, Alabama, USA

⁶Ministry of Community Development, Mother and Child Health, Lusaka, Zambia

Correspondence to

Dr Kristin M Wall, 1518 Clifton Road NE, Atlanta, GA 30322, USA; kmwall@emory.edu

Received 14 June 2016

Revised 23 November 2016

Accepted 21 December 2016

Published Online First

12 January 2017



CrossMark

To cite: Wall KM, Kilembe W, Vwalika B, et al. *Sex Transm Infect* 2017;**93**:259–266.

ABSTRACT

Background We present temporal trends in self-reported and biological markers of unprotected sex and sex with concurrent partners in discordant couples receiving couples' voluntary HIV counselling and testing (CVCT).

Methods Heterosexual Zambian HIV-serodiscordant couples were enrolled into longitudinal follow-up in an open cohort (1994–2012). Multivariable Anderson-Gill models explored predictors of self-report and biological indicators of unprotected sex within (including sperm on a vaginal swab, incident pregnancy or incident linked HIV infection) and outside (including self-report, STI and unlinked HIV infection) the union. Measures of secular trends in baseline measures were also examined.

Results At enrolment of 3049 couples, men were 35 years old on average, women were 29 years, and couples had been together for an average of 7 years. *M+F-* couples reported an average of 16.6 unprotected sex acts in the 3 months prior to enrolment (pre-CVCT), dropping to 5.3 in the >0–3 month interval, and 2.0 in >6 month intervals (p-trend <0.001). Corresponding values for *M-F+* couples were 22.4 unprotected sex acts in the 3 months prior enrolment, dropping to 5.2 in the >0–3 month interval, and 3.1 in >6 month intervals (p-trend <0.001). Significant reductions in self-report and biological markers of outside partners were also noted. Predictors of unprotected sex between study partners after CVCT included prevalent pregnancy (adjusted HR, aHR=1.6–1.9); HIV+ men being circumcised (aHR=1.2); and HIV- women reporting sex with outside partners (aHR=1.3), alcohol (aHR=1.2), injectable (aHR=1.4) or oral (aHR=1.4) contraception use. Fertility intentions were also predictive of unprotected sex (aHR=1.2–1.4). Secular trends indicated steady declines in reported outside partners and STIs.

Conclusion Reductions in self-reported unprotected sex after CVCT were substantial and sustained. Reinforced risk-reduction counselling in pregnant couples, couples desiring children and couples with HIV- women having outside partners or using alcohol or injectable or oral contraception are indicated.

INTRODUCTION

Roughly half of couples affected by HIV in sub-Saharan Africa are in HIV-serodiscordant relationships (one partner HIV-positive, one partner

HIV-negative),¹ and the majority of new infections originate with the HIV-positive index rather than concurrent, outside partners.² Couples' voluntary HIV counselling and testing (CVCT) has been associated with significant reductions in HIV incidence in serodiscordant couples as well as STIs and unplanned pregnancies.^{3–12}

These benefits are, in large part, the result of a decrease in unprotected sexual exposures. In a prospective study in Rwanda, where CVCT is now standard of care, condom use among serodiscordant couples increased from 4% at enrolment to 57% after 1 year of post-CVCT follow-up, and condom use was associated with lower HIV seroconversion rates.⁵ Among mixed serostatus couples, women in couples with at least one HIV-positive partner reported decreased frequency of coercive sex after joint counselling.¹³ In Zambia, where CVCT programmes were implemented began 20 years ago, a study among serodiscordant couples showed that self-reported condom use increased from 3% of sexual acts prior to CVCT to >80% after 1 year of follow-up, though under-reporting of unprotected sex was common.¹¹

The primary objective of our analysis was to assess changes in indicators of unprotected sex with the study partner measured at enrolment (reflecting time prior to CVCT services) and over time post-CVCT enrolment among HIV-serodiscordant heterosexual couples (*M+F-*, *M-F+*). We compare self-report and biological markers of unprotected sex to better quantify under-reporting. Finally, important secular trends in self-report and biological variables from 1994 to 2012 are described.

METHODS

Ethics

This study was approved by the University of Zambia (Research Ethics Committee IRB00001131) and the Emory Institutional Review Board (IRB00000453). Joint written informed consent was obtained from all participating couples.

Study design, participants and data collection

We analysed data from heterosexual HIV-serodiscordant couples recruited from CVCT services and enrolled in a longitudinal open cohort

study of HIV transmission in Lusaka, Zambia between 1994 and 2012. CVCT services include group counselling, rapid HIV testing and post-test couples' counselling with mutual disclosure of results.^{14 15} Guidelines for CVCT as prevention are available from WHO (<http://www.who.int/hiv/pub/guidelines/9789241501972/en/>) and couples' HIV counsellor training guidelines developed with participation of our research team are available from the Centers for Disease Control (<http://www.cdc.gov/globalaids/resources/prevention/chct.html>). Enrolled couples were followed every 3 months at the research clinic and received meals, childcare and transport reimbursement for each visit. Couples were censored at HIV seroconversion of the negative partner or couple separation, relocation, voluntary withdrawal or death. When antiretroviral treatment (ART) was available in government clinics beginning in 2007, HIV-positive partners were referred for triage; if and when they initiated ART they were released from the cohort. Due to funding limitations, follow-up was truncated at 24 months beginning in 2010 and 12 months beginning in 2011.

Baseline demographical, behavioural and clinical data were collected at enrolment.¹⁶ This included age, duration of cohabitation, number of prior pregnancies, literacy, alcohol use, fertility intentions, history of STI and clinical stage and viral load of the HIV+ partner. Time-varying covariates including contraception method, self-reported sex with and without a condom with study partner (recorded on coital logs provided by the research project), pregnancy status, self-reported sex with outside partners, sperm on a vaginal swab wet mount, STI diagnosed clinically, laboratory diagnosis of trichomonas in the woman (vaginal swab wet mount) and syphilis in either partner (rapid plasma regain (RPR) serology with later *Treponema pallidum* haemagglutination assay (TPHA) confirmation¹⁷) were collected at baseline and follow-up visits.

Outcomes of interest: unprotected sex with the study partner and sex with outside partners

Time-varying composite indicators of unprotected sex with the study partner and sex with outside partners were created including self-reported and biological markers. Quarterly intervals with unprotected sex with study partner were defined as one or more of: couple-reported condomless sex with study partner in the previous 3 months, incident pregnancy, incident seroconversion of the HIV-negative partner that was genetically linked to the positive partner, and sperm presence on a vaginal swab wet mount. The corresponding composite variable for sex with outside partners included self-report of outside partners and/or incident syphilis, trichomonas or unlinked HIV infection.

Changes in unprotected sex with the study partner and sex with outside partners before and after CVCT and over follow-up

The prevalence of individual indicators at baseline and during follow-up and the prevalence of the composite variables during follow-up is presented graphically. Composite variables could not be used at the enrolment visit for several reasons: first, couples had been tested and counselled a mean of 7 days before enrolment and had begun using condoms immediately, thus sperm (which is only detectable in vaginal swabs for a few days after intercourse) did not reflect 'pre-CVCT' behaviours; second, prevalent pregnancy at baseline was not comparable to incident pregnancy thereafter; finally, trichomonas and positive RPR serology for syphilis could reflect disease acquired more than 3 months prior to enrolment and thus would not be

comparable to incidence during the post-enrolment quarterly follow-up intervals.

Thus, only self-report of outside partners is compared between enrolment and follow-up, whereas tests of trend were performed to assess effects in the composite variable over time after enrolment. In a sub-analysis, we examined the magnitude of under-reporting of unprotected sex, overall and over time, by comparing self-report with biological indicators.

Predictors of unprotected sex with the study partner

Couple demographics and exposures of interest were described (counts and percentages for categorical variables, means and SDs for continuous variables, tabulated over all study intervals) by whether or not the couple was positive for the time-varying composite of unprotected sex within the couple. Unadjusted associations between covariates and the outcome were calculated via survival analysis accommodating both fixed and time-varying covariates (Anderson-Gill models). Factors significant in crude analyses were entered into multivariable models after assessing for multi-collinearity. We also built models adjusting for fertility intentions, which were collected from 2002 to 2006. To explore the possibility of informative censoring over long follow-up times, models were also run using inverse probability of censoring weighting (IPCW). To explore the possibility of important differences between the composite indicator and self-reported unprotected sex, models were additionally run using only self-reported unprotected sex as the outcome.

Self-reported and biological indicators of unprotected sex by calendar time of enrolment

Finally, we tabulated self-reported and biological indicators of unprotected sex over calendar time of enrolment to explore secular trends. Proportions and 95% CIs are shown. A test of trend was performed to assess secular trends.

Data were analysed using SAS V9.4 (SAS Institute, Inc, Cary, North Carolina, USA).

RESULTS

Changes in unprotected sex with the study partner before and after CVCT and over follow-up

Among 3049 couples (N=1393 M+F-, N=1656 M-F+), 57% had at least 1 year of follow-up, 35% had ≥ 2 years, and 22% had ≥ 3 years (average follow-up of 1.5 years per couple) (figure 1A, B).

M+F- couples reported an average of 16.6 unprotected sex acts within the past 3 months at enrolment (SD=22.4), dropping to 5.3 in the >0-3 month interval (SD=11.9), and 2.0 in >6 month intervals (SD=7.8) (p-trend<0.001). *M-F+* couples reported an average of 22.4 unprotected sex acts within the past 3 months at enrolment (SD=25.2), dropping to 5.2 in the >0-3 month interval (SD=12.3) and 3.1 in >6 month intervals (SD=11.1) (p-trend <0.001).

Reporting at least one unprotected sexual exposure per quarter decreased significantly from enrolment (reflecting sexual behaviour prior to CVCT) to the >0-3 month interval immediately after CVCT (78-46% of intervals for M+F- and 84-50% for M-F+ couples, p<0.01). Self-reported unprotected sex decreased thereafter to an average of 28% of intervals for M+F- couples and 43% for M-F+ couples over the remainder of follow-up visits (>3 months, p<0.01).

Linked HIV seroconversion rates were highest in the first month >0-3 follow-up interval, reflecting some infections acquired prior to CVCT; the incidence declined significantly between the first and later follow-up intervals (p<0.01),

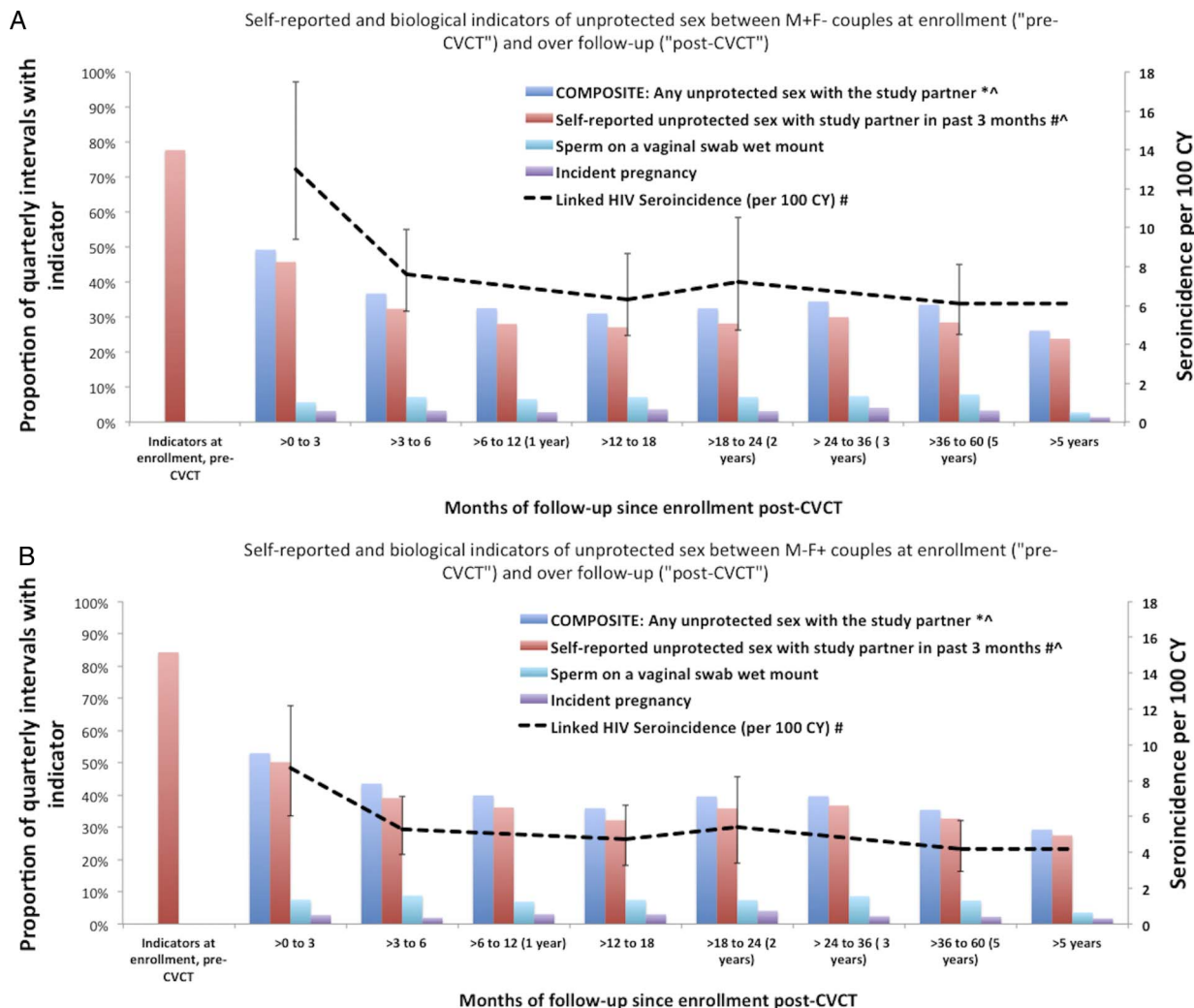


Figure 1 Self-reported and biological indicators of unprotected sex between HIV-serodiscordant couples at enrolment ('pre-couples' voluntary HIV counselling and testing, CVCT) and over follow-up ('post-CVCT') (A: M+F- couples; B: M-F+ couples). *Composite of: any self-reported unprotected sex with the study partner in the past 3 months, incident pregnancy (only during follow-up), sperm present on a vaginal swab wet mount and incident linked HIV seroconversion. Linked HIV seroconversion per 100 CY refer to z-axis. # $p < 0.01$ for differences between pre-CVCT versus first follow-up. ^ $p < 0.01$ for downward trend over post-CVCT follow-up time. Proportions are calculated among all couples; linked HIV seroconversion is calculated excluding couples who experienced an unlinked infection. CVCT, couples' HIV voluntary counselling and testing; CY, couple-years.

whereas rates after the first quarterly interval remained stable. Similarly, self-reported unprotected sex decreased significantly from pre-CVCT to first quarterly follow-up and had a significant subsequent downward trend ($p < 0.01$). Sperm presence on a vaginal swab wet mount and incident pregnancy did not change significantly during follow-up. These findings were similar for M+F- and M-F+ couples (figure 1A, B).

In the sub-analysis exploring the potential for under-reporting of unprotected sex during follow-up overall, 32% of incident pregnancies, 58% of linked seroconversions and 45% of sperm-positive wet smears occurred during intervals in which M+F- couples reported no unprotected sex. For M-F+ couples, 29% of pregnancies, 39% of linked seroconversions and 42% of sperm-positive wet smears occurred during intervals in which couples reported no unprotected sex. Over time, we did not observe significant changes in the amount of misclassification.

Predictors of unprotected sex with the study partner

Cohort demographics are shown in table 1. For M+F- couples, predictors of the composite indicator of unprotected sex with

the study partner after CVCT included: use of injectable (adjusted HR, aHR=1.4; 95% CI 1.3 to 1.6) or oral contraceptive pill (OC; aHR=1.4; 95% CI 1.2 to 1.5) versus condoms only; being currently pregnant (aHR=1.9; 95% CI 1.7 to 2.0) or post-partum (aHR=0.8; 95% CI 0.7 to 0.99) versus not pregnant; woman's baseline alcohol use (aHR=1.2; 95% CI 1.0 to 1.3) versus non-use; the man being circumcised (aHR=1.2; 95% CI 1.0 to 1.5); and the woman reporting outside partners (aHR=1.3; 95% CI 1.1 to 1.6) controlling for age, men's self-reported outside sex, and follow-up time since enrolment (>0-3 months vs later) (table 1). Later follow-up intervals were protectively compared with the first (>0-3 month) follow-up interval ($p < 0.0001$, not shown in table). In a model additionally controlling for the woman's fertility intentions, findings remained similar and desire for more children was predictive of unprotected sex (aHR=1.4).

For M-F+ couples, predictors of the composite indicator of unprotected sex with the study partner after CVCT included being currently pregnant (aHR=1.6; 95% CI 1.5 to 1.7) or post-partum (aHR=0.8; 95% CI 0.7 to 0.95) versus not

Table 1 Factors associated with the composite indicator of unprotected sex* between M+F– and M–F+ couples, univariable and multivariable analyses

	M+F– couples						M–F+ couples													
	Total cohort			Unadjusted			Multivariate Model†			Total cohort			Unadjusted			Multivariate Model†				
	(N interval, % or mean, SD)	Any unprotected sex (N interval, % or mean, SD)	p Value (2-tail)	aHR	95% CI	p Value (two-tail)	(N interval, % or mean, SD)	Any unprotected sex (N interval, % or mean, SD)	p Value (two-tail)	aHR	95% CI	p Value (two-tail)	(N interval, % or mean, SD)	Any unprotected sex (N interval, % or mean, SD)	p Value (two-tail)	aHR	95% CI	p Value (two-tail)		
Demographics																				
Man age (per year increase)‡	35.2	7.6	34.0	7.4	<0.0001	<0.0001	0.98	0.98 to 0.99	<0.0001	0.98	0.98 to 0.99	<0.0001	35.2	8.6	34.3	8.3	<0.0001	0.99	0.98 to 0.99	<0.0001
Woman age (per year increase) ‡	28.4	6.8	27.4	6.6	<0.0001	<0.0001	Ref			Ref			28.6	6.7	27.9	6.5	<0.0001			
Years cohabiting (per year increase) ‡	8.1	6.5	7.3	6.0	<0.0001	<0.0001							6.1	5.8	5.6	5.4	<0.001			
Woman alcohol use last year																				
Yes	2549	17%	1057	18%	0.022	0.033	1.15	1.01 to 1.31	0.033	1.15	1.01 to 1.31	0.033	3606	24%	1550	23%	0.729			
No	12 582	83%	4727	82%			Ref			Ref			11 585	76%	5119	77%				
Man alcohol use last year																				
Yes	10 152	67%	3964	68%	0.033	0.088	1.11	0.99 to 1.24	0.088	1.11	0.99 to 1.24	0.088	11 181	73%	4979	74%	0.166			
No	5034	33%	1825	32%			Ref			Ref			4034	27%	1722	26%				
Family planning and sexual behaviour																				
Contraceptive method (time-varying)																				
Condoms alone	9553	62%	3701	63%			Ref			Ref			10 318	67%	4698	69%				
OCPs	2128	14%	969	16%	<0.0001	<0.0001	1.37	1.22 to 1.54	<0.0001	1.37	1.22 to 1.54	<0.0001	2061	13%	910	13%	0.368			
Injectables	2011	13%	794	13%	0.002	0.002	1.43	1.25 to 1.64	<0.0001	1.43	1.25 to 1.64	<0.0001	1975	13%	808	12%	0.271			
Permanent method, IUD, implant	1711	11%	437	7%	0.508	0.508	1.14	0.90 to 1.44	0.293	1.14	0.90 to 1.44	0.293	1157	7%	405	6%	0.716			
Pregnancy status (time-varying)																				
Not pregnant	11 922	87%	4427	80%			Ref			Ref			12 167	89%	5315	85%	Ref			
Pregnant (not incident)	1346	10%	938	17%	<0.0001	<0.0001	1.85	1.71 to 2.01	<0.0001	1.85	1.71 to 2.01	<0.0001	1140	8%	857	14%	<0.0001	1.56	1.46 to 1.66	<0.0001
Post-partum (up to 6 months)	510	4%	136	2%	0.004	0.038	0.83	0.70 to 0.99	0.038	0.83	0.70 to 0.99	0.038	3418	2%	108	2%	0.005	0.81	0.68 to 0.95	0.0107
Number of previous pregnancies (per pregnancy increase)‡	3.7	2.5	3.5	2.3	0.001	0.001							3.4	2.3	3.3	2.1	0.032			
Fertility intentions of woman																				
Yes, next year	1051	18%	418	21%	0.045	0.045							1642	23%	693	24%	0.372			
Yes, but not next year	1217	21%	472	24%	0.005	0.005							1770	25%	772	27%	0.063			
Do not know/no	3610	61%	1076	55%									3750	52%	1435	49%				
Fertility intentions of man																				
Yes, next year	671	13%	259	15%	0.126	0.126							1145	18%	511	20%	0.023			
Yes, but not next year	1652	32%	573	34%	0.160	0.160							2556	39%	1073	42%	0.016			
Do not know/No	2880	55%	869	51%									2829	43%	994	39%				
Woman self-reporting sex with outside partner (time-varying)																				
Yes	205	1%	115	2%	<0.001	<0.001	1.30	1.09 to 1.55	0.003	1.30	1.09 to 1.55	0.003	236	2%	131	2%	0.241			
No	14 848	99%	5720	98%			Ref			Ref			14 150	98%	6408	98%				

Continued

Table 1 Continued

	M+F- couples				M-F+ couples								
	Total cohort		Unadjusted		Total cohort		Unadjusted						
	(N interval, % or mean, SD)	(N interval, % or mean, SD)	p Value (2-tail)	aHR	95% CI	(N interval, % or mean, SD)	(N interval, % or mean, SD)	p Value (two-tail)	aHR	95% CI	p Value (two-tail)		
Clinical													
Circumcised male partner													
Yes	1508	10%	619	11%	0.05	1.23	1.03 to 1.46	0.021	2587	17%	1084	16%	0.249
No	13 876	90%	5266	89%		Ref			12 963	83%	5745	84%	

Fertility intentions collected from 2002 to 2011; viral load collected from 1999.
 p Values are two-tailed.
 *Composite of: any self-reported unprotected sex with the study partner in the past 3 months, incident pregnancy, sperm present on a vaginal swab wet prep and incident linked HIV seroconversion.
 †Log viral load of positive partner (per log₁₀ copies/mL increase). Nyanja literacy and man self-reporting sex with outside partner were not associated (p>0.05).
 ‡Controlling for time since enrolment (>0–3 months vs later, p<0.005).
 #Indicates a continuous variable, mean and standard deviation reported.
 Nyanja: Commonly spoken language in Lusaka, Zambia.
 Stage of HIV, income and man's literacy were not significant.
 IUD, copper intrauterine device; OCP, oral contraceptive pill.

pregnant/post-partum, controlling for age and increasing follow-up time since enrolment (table 1). Increasing follow-up interval (>0–3 months vs later) since enrolment was again protective for unprotected sex (p<0.0001, not shown in table). In a model additionally controlling for the man's fertility intentions, findings remained similar and desire for more children was predictive of unprotected sex (aHR=1.2).

Models using IPCW methods to explore the potential influence of selective loss to follow-up produced very similar findings with the exception of post-partum status for M+F- couples, which became non-significant. Models using the self-reported unprotected sex as the outcome showed similar results, with the exception that women's self-reported outside sex and post-partum periods were not significant.

Changes in indicators of sex with outside partners over follow-up time

HIV+ men were more likely to report sex with outside partners in the 3 months prior to enrolment than HIV- men (14% vs 10%, p<0.01) (figure 2A, B). Self-reported outside partners among HIV+ men decreased significantly by half immediately after CVCT, with no significant trend over subsequent follow-up. Self-reported outside partners among HIV- men showed no change pre- versus post-CVCT, but did have a significant overall downward trend during post-CVCT follow-up.

Few women ever reported outside partners, and there was a significant downward trend during follow-up. The incidence of trichomonas also decreased significantly over follow-up, as did the composite variable.

Self-reported and biological indicators of unprotected sex by calendar time of enrolment

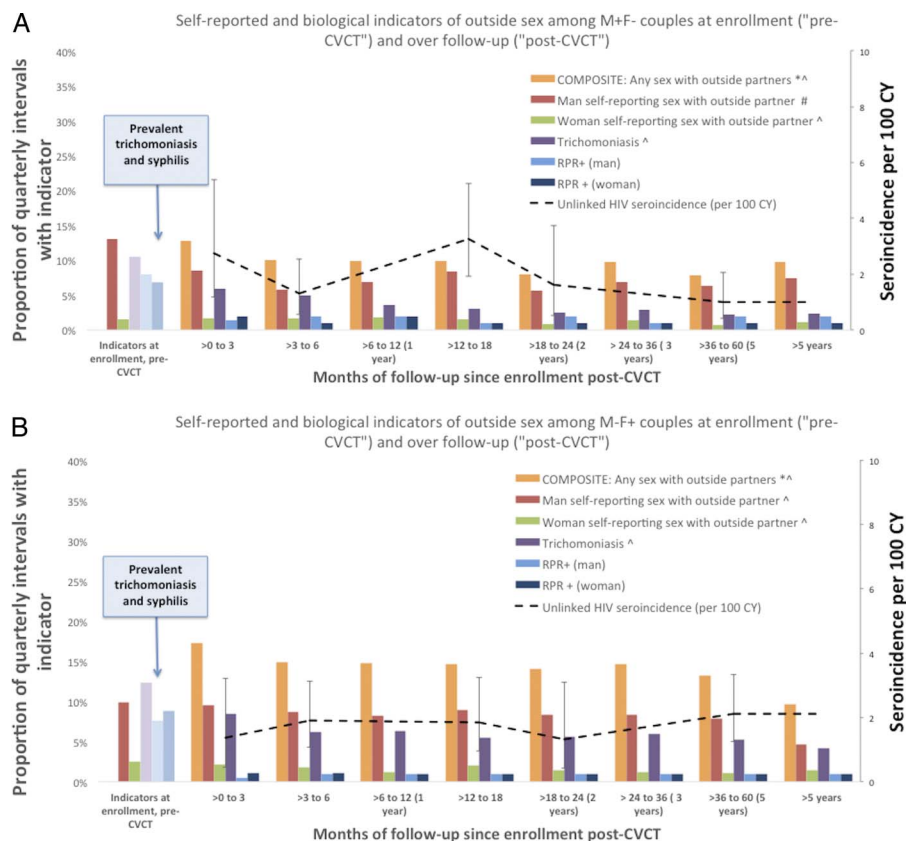
Self-reported unprotected sex with the study partner at enrolment and prevalent pregnancy at enrolment did not significantly change over calendar time between 1994 and 2012 (figure 3A, B). In contrast, there were substantial declines (p-trend <0.01) in history of STI in the year prior to enrolment: comparing the 1994–1998 to the 2007–2012 time frames, history of STI decreased from 44% to 26% among HIV+ men, 35% to 7% among HIV- women, 31% to 15% among HIV- men and 48% to 13% among HIV+ women. Interestingly, history of STI peaked in the 1999–2002 time frame. There were also marked declines in men reporting sex with outside partners, noticeably beginning in 2003–2006. HIV+ women had a higher prevalence of trichomonas than HIV- women in 1994–1998 (27% vs 18%, p<0.05), with both showing a decline in 2007–2012 (4% of HIV+ and 6% of HIV). Positive RPR serology was highest in HIV+ women at all time points, with a high of 19% in the 1994–1998 time frame, with a significant over time in all groups.

DISCUSSION

This study examined the impact of CVCT on sexual risk behaviour over time in a large cohort of HIV-serodiscordant heterosexual couples in Zambia. As expected, there were significant reductions in self-reported measures of unprotected sex with the study partner after CVCT with no evidence of relapse in these risk behaviours with time. Similarly, measures of concurrent partnerships showed decreases after CVCT. Predictors of residual unprotected sex within marriage highlight opportunities for targeted counselling. These findings support WHO guidelines to provide joint HIV testing and counselling for prevention.

Figure 2 Self-reported and biological indicators of outside sex among HIV-serodiscordant couples at enrolment ('pre-couples' voluntary HIV counselling and testing, CVCT) and over follow-up ('post-CVCT') (A: M+F– couples; B: M–F+ couples).

*Composite of: any self-reported sex with outside partners in the past 3 months for men or women, incident unlinked HIV seroconversion incident trichomoniasis, and incident syphilis (prevalent trichomoniasis and prevalent syphilis not included in composite indicator). Unlinked HIV seroconversion per 100 CY refer to z-axis. # $p < 0.01$ for differences between pre-CVCT versus first follow-up. ^ $p < 0.01$ for downward trend over post-CVCT follow-up time. CY, couple-years; CVCT, couples' HIV voluntary counselling and testing; RPR, rapid plasma regain.



A strength of this analysis is the use of the composite indicator to correct for known outcome misclassification and quantify under-reporting: 29–32% of incident pregnancies, 39–58% of linked seroconversions and 42–45% of sperm-positive vaginal smears occurred during intervals in which couples reported no unprotected sex. This implies that the actual number of unprotected acts is actually up to almost 60% higher than the self-reported numbers. In addition, multivariate models using the composite outcome measure detected two additional significant predictors: a protective effect during the post-partum period for all couples and increased risk of exposure within marriage if the HIV– woman also reported outside partners.

Our finding that OCP and injectable use was significantly associated with the composite measure of unprotected sex among M+F– couples, which confirmed our previous findings that bivariate associations between OCPs/injectables and HIV in women were eliminated in analyses controlling for measures of unprotected sex.^{18 19} The increase in risky sexual behaviour in this sub-group may explain why other studies that have not controlled for confounding by unprotected sex have seen increased rates of seroconversion for oral and injectable contraceptive users.²⁰ Reinforced dual-method use counselling for women using OCPs and injectable hormonal contraception is warranted.

Pregnancy was associated with unprotected sex in both M+F– and M–F+ couples. This might be explained by misconceptions, such as traditional beliefs that semen nourishes the fetus^{21 22} or simply that couples engaging in unprotected sex are more likely to get pregnant and continue this behaviour. Studies to understand why discordant couples engage in unprotected sex during pregnancy are warranted, along with reinforced risk-reduction counselling in pregnant HIV-serodiscordant couples.

The use of alcohol by women in M+F– couples was predictive of the composite indicator of unprotected sex, as was HIV– women reporting concurrent sexual partners. Though uncommon, this may be an important risk profile to study. Additionally, the association of circumcision and increased unprotected sex among M+F– couples may be the result of conflicting messages about protection from HIV (only HIV– men) versus other STI (both HIV+ and HIV– men).²³ Additional counselling in M+F– couples is needed, along with further research to explore this finding.

Ndase *et al.*²⁴ found significant increases in the proportion of uninfected partners within serodiscordant couples self-reporting sex with outside partners after 2 years of follow-up in seven African countries. In contrast, our study showed either a decrease or no change in self-reported outside partners, but a substantial decline in syphilis and trichomonas. This difference might be due to our use of biological markers and/or could be a reflection of the relationship stability of couples residing in a region with relatively homogenous strong religious and cultural beliefs.

Secular trends in baseline measures indicate that the environment we were working in was changing with steady reductions in self-reported STI and laboratory diagnosis of syphilis and trichomonas beginning in 2002 and most notable after 2007. Although this coincided with declines in reported outside partners, there may also have been an important contribution from HIV/STI prevention messages and/or STI treatment programme scale-up outside our study.

These findings should be interpreted in light of several considerations. As detailed, self-report of sexual behaviours is subject to under-reporting (though some 'misclassification' could be due to condom failure); meanwhile, biological markers of unprotected sex are insensitive. Given high levels of misclassification, we feel

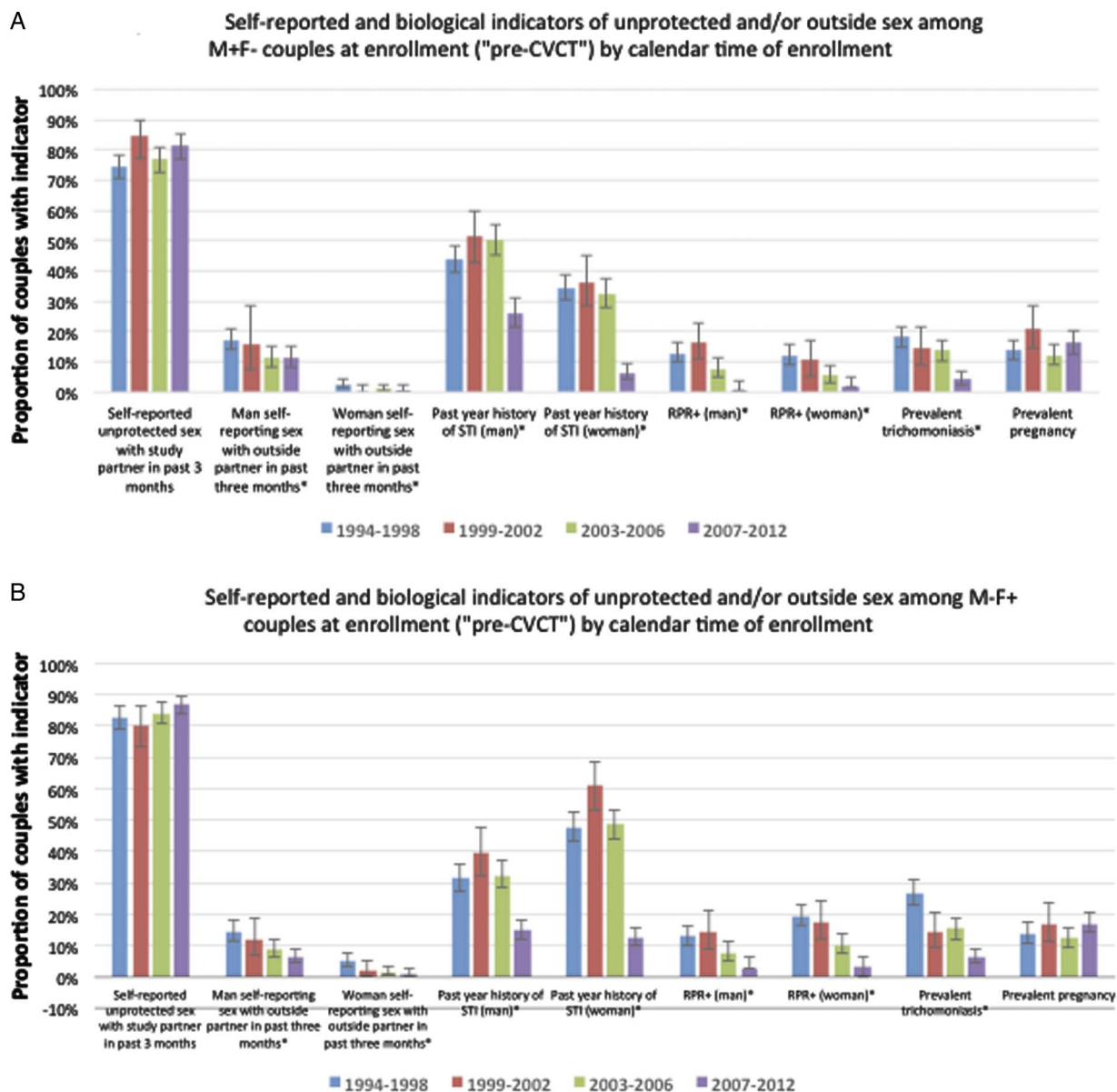


Figure 3 Self-reported and biological indicators of unprotected among HIV-serodiscordant couples at enrolment ('pre-couples' voluntary HIV counselling and testing, CVCT) and over follow-up ('post-CVCT') (A: M+F- couples; B: M-F+ couples). *p-trend <0.01 for differences over calendar time. 95% error bars (Clopper-Pearson exact) shown. CVCT, couples' HIV voluntary counselling and testing; RPR, rapid plasma regain.

that evaluating multiple indicators of unprotected sex is critical and supports our rationale for modelling the composite indicator. Though we corrected for instances of under-reporting when possible using biological measures, those measures are themselves imperfect, possibly leading to residual misclassification. However, since we did not observe that misclassification changed over time, the overall trends and relative effects observed should not be biased. Under-reporting of unprotected sex is common and mitigating this bias should be a major part of study design. Strategies include sexual diaries to enhance recall,²⁵ and Audio Computer-Assisted Self-Interviewing (ACASI) which may increase reporting of sensitive high-risk behaviours.²⁶ A recent study using biomarkers to compare ACASI to interview in Zimbabwe confirmed under-reporting in both groups, reinforcing the usefulness of biological markers.²⁷

In addition, the generalisability of our findings must be interpreted in light of a self-selection process that may lead to more health-conscious couples being retained for longer. Selective loss

to follow-up, extensively evaluated and reported previously in our cohorts²⁸ implies that our findings are more generalisable to older couples who live closer to the clinic in which the female partner had an older age of first sexual intercourse and, in M-F+ couples, generalisable to couples with increased income. IPCW findings did not indicate that informative censoring was biasing our results. Finally, not all indicators of unprotected sex (eg, sperm presence on a vaginal swab wet prep and incident pregnancy) could definitively be attributed to the study partner, though we assume that the majority of instances of these indicators, which can only be measured in women, are related to unprotected sex with the study partner given the low incidence of genetically unlinked infections and that women report few outside contacts.

CONCLUSION

Our findings indicate that in HIV-serodiscordant heterosexual couples, reductions in unprotected sex and outside sex after

CVCT are significant and sustained. Condom use was imperfect and associated with specific characteristics that should elicit additional counselling. When possible, biological markers should be assessed along with self-report.

Key messages

- ▶ Couples' voluntary HIV counselling and testing (CVCT) intervention reduces HIV/STI incidence in HIV-serodiscordant couples by reducing unprotected sex.
- ▶ Reductions in unprotected sex and indicators of outside sex after CVCT are significant and sustained over long-term follow-up in HIV-serodiscordant heterosexual couples.
- ▶ Almost 40% of couples continued to have some indicator of unprotected sex and targeted risk reduction counselling is warranted.
- ▶ Couples' voluntary HIV counselling and testing should be scaled up per WHO guidelines.

Handling editor Jackie A Cassell

Acknowledgements We would like to acknowledge the couples and staff in Zambia that made this study possible.

Contributors KMW and LBH contributed to the analysis and interpretation of data, drafted the article and revised it critically for important intellectual content, and gave final approval of the version to be published. WK, BV, SL, RC, CV, LM, EC and JM contributed to the conception and design of the study, revised the article critically for important intellectual content, and gave final approval of the version to be published. UO, NHK, IB and AT contributed to the study conception and design, revised the article critically for important intellectual content, and gave final approval of the version to be published. SA contributed to the study design and conception, contributed to the analysis and interpretation of data, revised the article critically for important intellectual content and gave final approval of the version to be published.

Competing interests This research was conducted with funding from NICHD R01-40125, NIAID R01-23980 and R01-40951 and R21-33863, NIMH R01-46571, R01-66767, and R01-95503; the Fogarty AIDS International Training in Research Program (AITRP) FIC D43 TW001042, NIH Centers for AIDS Research, the Social & Behavioral Science Core of the Emory Center for AIDS Research (CFAR) P30 AI050409; the US Centers for Disease Control and Prevention (5U2GPS000758) and the International AIDS Vaccine Initiative. This study was made possible by the generous support of the American people through the US Agency for International Development (USAID). The contents do not necessarily reflect the views of USAID or the US Government. The funders had no role in study design, data collection and analysis, decision to publish, or preparation of the manuscript.

Funding US Agency for International Development (International AIDS Vaccine Initiative, National Institutes of Health (NICHD R01 HD40125; NIMH R01 66767; D43 TW001042; P), Centers for Disease Control and Prevention (5U2GPS000758).

Ethics approval Emory University and Zambian IRBs.

Provenance and peer review Not commissioned; externally peer reviewed.

Data sharing statement The dataset may be eligible to be added to a public repository.

Open Access This is an Open Access article distributed in accordance with the terms of the Creative Commons Attribution (CC BY 4.0) license, which permits others to distribute, remix, adapt and build upon this work, for commercial use, provided the original work is properly cited. See: <http://creativecommons.org/licenses/by/4.0/>

REFERENCES

- 1 Eyawo O, de Walque D, Ford N, *et al.* HIV status in discordant couples in sub-Saharan Africa: a systematic review and meta-analysis. *Lancet Infect Dis* 2010;10:770–7.
- 2 Chemaitelly H, Abu-Raddad LJ. External infections contribute minimally to HIV incidence among HIV sero-discordant couples in sub-Saharan Africa. *Sex Transm Infect* 2013;89:138–41.
- 3 Dunkle KL, Stephenson R, Karita E, *et al.* New heterosexually transmitted HIV infections in married or cohabiting couples in urban Zambia and Rwanda: an analysis of survey and clinical data. *Lancet* 2008;371:2183–91.
- 4 World Health Organization. Guidance on couples HIV testing and counselling—including antiretroviral therapy for treatment and prevention in serodiscordant couples. Secondary Guidance on couples HIV testing and counselling—including antiretroviral therapy for treatment and prevention in serodiscordant couples, 2012. http://apps.who.int/iris/bitstream/10665/44646/1/9789241501972_eng.pdf?ua=1
- 5 Allen S, Tice J, Van de Perre P, *et al.* Effect of serotesting with counselling on condom use and seroconversion among HIV discordant couples in Africa. *BMJ* 1992;304:1605–9.
- 6 Fideli US, Allen SA, Musonda R, *et al.* Virologic and immunologic determinants of heterosexual transmission of human immunodeficiency virus type 1 in Africa. *AIDS Res Hum Retroviruses* 2001;17:901–10.
- 7 Guthrie BL, de Bruyn G, Farquhar C. HIV-1-discordant couples in sub-Saharan Africa: explanations and implications for high rates of discordancy. *Curr HIV Res* 2007;5:416–29.
- 8 Hira SK, Nkowane BM, Kamanga J, *et al.* Epidemiology of human immunodeficiency virus in families in Lusaka, Zambia. *J Acquir Immune Defic Syndr* 1990;3:83–6.
- 9 Kamanga M, Ryder RW, Jingu M, *et al.* Evidence of marked sexual behavior change associated with low HIV-1 seroconversion in 149 married couples with discordant HIV-1 serostatus: experience at an HIV counselling center in Zaire. *AIDS* 1991;5:61–7.
- 10 Becker S, Mlay R, Schwandt HM, *et al.* Comparing couples' and individual voluntary counseling and testing for HIV at antenatal clinics in Tanzania: a randomized trial. *AIDS Behav* 2010;14:558–66.
- 11 Allen S, Meinzen-Derr J, Kautzman M, *et al.* Sexual behavior of HIV discordant couples after HIV counseling and testing. *AIDS* 2003;17:733–40.
- 12 Curran K, Baeten JM, Coates TJ, *et al.* HIV-1 prevention for HIV-1 serodiscordant couples. *Curr HIV/AIDS Rep* 2012;9:160–70.
- 13 Roth DL, Stewart KE, Clay OJ, *et al.* Sexual practices of HIV discordant and concordant couples in Rwanda: effects of a testing and counselling programme for men. *Int J STD AIDS* 2001;12:181–8.
- 14 Chomba E, Allen S, Kanweka W, *et al.* Evolution of couples' voluntary counseling and testing for HIV in Lusaka, Zambia. *J Acquir Immune Defic Syndr* 2008;47:108–15.
- 15 Boeras DI, Luisi N, Karita E, *et al.* Indeterminate and discrepant rapid HIV test results in couples' HIV testing and counselling centres in Africa. *J Int AIDS Soc* 2011;14:18.
- 16 Stephenson R, Barker J, Cramer R, *et al.* The demographic profile of sero-discordant couples enrolled in clinical research in Rwanda and Zambia. *AIDS care* 2008;20:395–405.
- 17 Dionne-Odom J, Karita E, Kilembe W, *et al.* Syphilis treatment response among HIV-discordant couples in Zambia and Rwanda. *Clin Infect Dis* 2013;56:1829–37.
- 18 Wall KM, Kilembe W, Vwalika B, *et al.* Hormonal Contraceptive Use Among HIV-Positive Women and HIV Transmission Risk to Male Partners, Zambia, 1994–2012. *J Infect Dis* 2016;214:1063–71.
- 19 Wall KM, Kilembe W, Vwalika B, *et al.* Hormonal contraception does not increase women's HIV acquisition risk in Zambian discordant couples, 1994–2012. *Contraception* 2015;91:480–7.
- 20 Polis CB, Curtis KM, Hannaford PC, *et al.* An updated systematic review of epidemiological evidence on hormonal contraceptive methods and HIV acquisition in women. *AIDS* 2016;30:2665–83.
- 21 Grinker RR, Lubkemann SC, Steiner C (eds). *Perspectives on Africa: a reader in culture, history and representation*. UK: Blackwell Publishing Ltd, 2010.
- 22 Nichter M (ed). *Anthropological approaches to the study of ethnomedicine*. USA: Gordon and Breach Science Publishers, 1992.
- 23 Wawer MJ, Makumbi F, Kigozi G, *et al.* Circumcision in HIV-infected men and its effect on HIV transmission to female partners in Rakai, Uganda: a randomised controlled trial. *Lancet* 2009;374:229–37.
- 24 Ndase P, Celum C, Thomas K, *et al.* Outside sexual partnerships and risk of HIV acquisition for HIV uninfected partners in African HIV serodiscordant partnerships. *J Acquir Immune Defic Syndr* 2012;59:65–71.
- 25 Researching Sexual Behavior. *Methodological issues*. Bloomington, IN: Indiana University Press, 1997.
- 26 van der Elst EM, Okuku HS, Nakomya P, *et al.* Is audio computer-assisted self-interview (ACASI) useful in risk behaviour assessment of female and male sex workers, Mombasa, Kenya? *PLoS ONE* 2009;4:e5340.
- 27 Minnis AM, Steiner MJ, Gallo MF, *et al.* Biomarker validation of reports of recent sexual activity: results of a randomized controlled study in Zimbabwe. *Am J Epidemiol* 2009;170:918–24.
- 28 Kempf MC, Allen S, Zulu I, *et al.* Enrollment and retention of HIV discordant couples in Lusaka, Zambia. *J Acquir Immune Defic Syndr* 2008;47:116–25.