

# Neurotoxicities in the treatment of HIV between dolutegravir, rilpivirine and dolutegravir/rilpivirine: a meta-analysis

Anthony Allen Reeves <sup>1</sup>, Andrea V Fuentes,<sup>1</sup> Joshua Caballero,<sup>1</sup> Jennifer E Thomas,<sup>1</sup> Juan F Mosley II,<sup>1</sup> Catherine Harrington<sup>2</sup>

► Additional material is published online only. To view, please visit the journal online (<http://dx.doi.org/10.1136/sextrans-2020-054821>).

<sup>1</sup>Department of Clinical and Administrative Sciences, Larkin University College of Pharmacy, Miami, Florida, USA

<sup>2</sup>Lloyd L Gregory School of Pharmacy, Palm Beach Atlantic University, West Palm Beach, Florida, USA

## Correspondence to

Dr Anthony Allen Reeves, Department of Clinical and Administrative Sciences, Larkin University College of Pharmacy, Miami, FL 33169, USA; a.allenreeves13@gmail.com

Received 3 October 2020  
Revised 4 January 2021  
Accepted 7 January 2021  
Published Online First  
29 March 2021

## ABSTRACT

**Objective** To assess the risk of neuropsychiatric adverse effects (ie, depression, anxiety, insomnia, dizziness, suicidal behaviour) among patients treated with rilpivirine, dolutegravir and dolutegravir/rilpivirine.

**Design** This is a systematic review and meta-analysis of randomised controlled trials. Quality of evidence was assessed using Jadad scoring system.

**Data sources** Three electronic databases were searched for available publications up to 1 May 2020. Searches included relevant studies, trial registers, conference proceeding abstracts and grey literature.

**Inclusion criteria** Randomised controlled trials with data focused on adult participants (ie, 18 years of age or older) receiving dolutegravir 50 mg, rilpivirine 25 mg or combination of dolutegravir 50 mg/rilpivirine 25 mg once daily.

**Results** Twenty studies with a minimum duration of 48 weeks and average Jadad score of 4 were included (n=10 998). Primary objective demonstrated a relative risk (RR) synergistic effect on depressive symptoms for dolutegravir/rilpivirine (RR=2.82; 95% CI (1.12 to 7.10)) when compared with dolutegravir (RR=1.10; 95% CI (0.88 to 1.38)) and rilpivirine (RR=1.08; 95% CI (0.80 to 1.48)). Secondary objectives showed no difference between dolutegravir, rilpivirine and dolutegravir/rilpivirine to efavirenz. Additionally, excluding efavirenz studies, dolutegravir and dolutegravir/rilpivirine yielded increased depression (RR=1.34; 95% CI (1.04 to 1.74)).

**Conclusion** The combination of dolutegravir/rilpivirine appears to increase the risk of depressive symptoms. Despite the increase, the clinical significance is unknown and needs further study. Additionally, neurotoxicity risk appears similar between dolutegravir, rilpivirine and dolutegravir/rilpivirine antiretroviral therapy when compared with efavirenz-based antiretroviral therapy.

## INTRODUCTION

Approximately 37.9 million people worldwide live with HIV and about 25.4 million people use antiretroviral therapy (ART) to manage their infection.<sup>1</sup> HIV compromises the immune system by attacking CD4 white blood cells. Without ART, HIV can progress to AIDS, defined as a CD4 count <200 cells/mm<sup>3</sup>, increasing the risk for opportunistic infections.<sup>2</sup>

Patients need to be at least 80% adherent to their ART to continuously suppress the progression of HIV.<sup>2</sup> Reasons for non-adherence include intolerable side-effects, economic/social status, fear of

perceived stigma and depression. Depression is a vital concern due to the clinical presentations of amotivation, sleep disturbances, apathy and suicidal ideation.<sup>3</sup> People living with HIV who exhibit amotivation and other depressive-related symptoms are more likely to be non-adherent and tend to have a poor outlook on life.<sup>3</sup> Some antiretrovirals (ARVs) are known to cause neuropsychiatric adverse effects such as depression.<sup>4</sup> Identifying ARVs associated with neuropsychiatric adverse effects or neurotoxicities can assist in properly assessing potential risk factors that can lead to non-adherence and discontinuation due to intolerance; thereby ensuring practitioners provide the most comprehensive care in the management of HIV.

ART is designed to attack the life cycle of HIV preventing its replication. It is usually composed of three-drug regimens with each drug hindering a step in the replication cycle. Manufacturers currently produce two/three drug combinations to improve adherence and decrease the burden of adverse effects. Efavirenz, a component in one of the first Food and Drug Administration (FDA)-approved three-drug single tablet regimens, has traditionally been used in ART. However, it is being used less frequently in clinical guidelines such as the US Department of Health and Human Services AIDSinfo due to its extensive neuropsychiatric adverse effects.<sup>5</sup> Newer agents such as a two-drug combination composed of dolutegravir and rilpivirine have become an alternative regimen due to perceived less neurotoxic adverse effects. Dolutegravir is a commonly prescribed ART that has become a first-line agent in the USA and Europe with over 50% of regimens containing this agent.<sup>6</sup> The WHO has even classified dolutegravir as an Essential Medicine for developing countries.<sup>6</sup> Dolutegravir is an integrase strand transfer inhibitor (INSTI) that prevents the integration of viral DNA into host cell DNA.<sup>7</sup> Rilpivirine is a non-nucleoside reverse transcriptase inhibitor (NNRTI) that blocks HIV reverse transcriptase.<sup>8</sup> As a result, both medications act synergistically to suppress viral replication inhibiting two different pathways of the HIV replication cycle. However, the ARV combination of dolutegravir and rilpivirine has a warning for depressive disorders and other neuropsychiatric adverse effects based on the rilpivirine component.<sup>9</sup> Other neuropsychiatric adverse effects include anxiety, insomnia, dizziness and suicidal behaviours.<sup>10</sup> Rilpivirine is documented to exacerbate



© Author(s) (or their employer(s)) 2021. No commercial re-use. See rights and permissions. Published by BMJ.

**To cite:** Allen Reeves A, Fuentes AV, Caballero J, et al. *Sex Transm Infect* 2021;**97**:261–267.

depressive symptoms and other central nervous system (CNS) toxicities, thereby providing caution when prescribing rilpivirine to patients with a history or diagnosis of depression.<sup>8,9</sup> While dolutegravir has been linked to neurotoxicities as well, at this time it does not warrant the same precaution as rilpivirine.<sup>7,8</sup> Additionally, it is unknown if these agents differ in neuropsychiatric adverse effects compared with non-preferred efavirenz-based treatments. Therefore, the primary objective of this study was to evaluate the risk of neurotoxicities (ie, depression, anxiety, insomnia, dizziness, suicidal behaviour) among patients treated with ARVs rilpivirine, dolutegravir and dolutegravir/rilpivirine. The secondary objective was to compare the risk between the aforementioned agents and efavirenz-based therapy.

## METHOD

A systematic review of literature was conducted to identify studies observing participants taking an oral tablet of either dolutegravir, rilpivirine or the combination of dolutegravir/rilpivirine in the treatment of HIV. MEDLINE via PubMed, AIDSinfo.nih.gov and ClinicalTrials.gov medical databases were searched for available publications up to 1 May 2020. The keyword search terms used were the generic, brand and scientific names for the following medications “rilpivirine/Edurant/TMC278”, “dolutegravir/Tivicay”, “rilpivirine and dolutegravir/Juluca”. These terms were paired with “toxicity” and/or “neurotoxicity” (eg, dolutegravir toxicity). Data were extracted independently by two researchers (AAR, AVF) and reviewed by four peers (JC, JET, JFM, CH) for quality analysis. All searches were limited to only include English-language publications. Adverse event data were collected from ClinicalTrials.gov from both the serious adverse events and other adverse events sections and combined in the data analysis.

Only randomised controlled trials (RCTs) were included. Masking could either be open labelled or double blinded. Studies were included if they involved adult participants 18 years of age or older who received at least one dose of dolutegravir 50 mg, rilpivirine 25 mg or combination of dolutegravir 50 mg/rilpivirine 25 mg once daily. All participants, except those receiving dolutegravir/rilpivirine, must have been on a guideline-based HIV backbone regimen. The HIV backbone regimen was defined as two nucleoside reverse transcriptase inhibitors (NRTIs), which are combined with a third ARV HIV drug from either the NNRTIs, protease inhibitors or INSTIs drug class.<sup>11</sup> Any duration of adverse drug events reported was included. Exclusion criteria consisted of observational studies (eg, cohorts), studies involving paediatric/adolescents, studies withdrawn or terminated early, studies not reporting adverse events data, using non-specified doses and if adverse event data reported were inconclusive. Inconclusive was defined as a study using the same drug in both treatment and control arms.

The studies were evaluated for their neuropsychiatric adverse events data specifically depression, anxiety, insomnia, dizziness and suicidal behaviour. Due to an overlap of certain related adverse events identified, the events were classified under their respective associated main neuropsychiatric adverse effect being analysed. Depression was defined as itself, depressed mood, major depression, low mood, adjustment disorder with depressed mood, persistent depressive disorder, seasonal affective disorder and sadness. Anxiety was defined as itself, nervousness, panic attacks and panic reactions. Insomnia was defined as itself, restlessness and difficulty sleeping. Dizziness was defined as itself and lightheadedness. Suicidal behaviour was defined as itself, suicide attempt and suicide ideation.

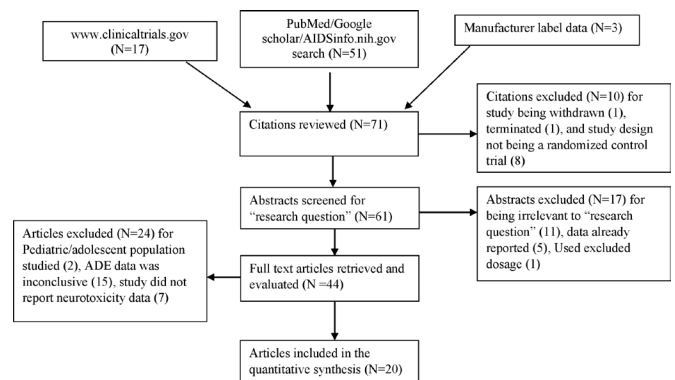
The quality of the RCTs was assessed using the Jadad scoring method. Jadad score criteria were based on randomisation, generated sequence of randomisation, type of blinding, and description of withdrawals and dropouts.<sup>12</sup> The scoring system ranged from a scale of 0–5, with 5 being the highest quality of research design. Two reviewers (AAR, AVF) assessed and provided initial Jadad scores for the included articles. Three reviewers then independently assessed the initial Jadad scores (JC, JET, JFM). If any discrepancies in scoring were identified, a Delphi technique was employed with one author (CH) as the facilitator.

A meta-analysis was conducted to evaluate rates of neuropsychiatric adverse effects. Risk ratios (RRs) were calculated by using the comparison of rilpivirine, dolutegravir and dolutegravir/rilpivirine versus other ART. A primary analysis was conducted using all included studies without exclusions. A subanalysis of RRs was then conducted excluding efavirenz due to its FDA-recognised warnings and documented reports of neuropsychiatric adverse effects.<sup>13,14</sup> Review Manager (RevMan) V.5.3 software was used for data analyses to determine the adverse drug event RRs.<sup>15</sup> RevMan V.5.3 RRs were computed using dichotomous data type, Mantel-Haenszel statistical method, random effects analysis mode and a 95% CI. All results were cross checked by JC, JET, JFM and CH.

## RESULTS

The medical database searches identified a total of 71 studies (figure 1). The initial screening of study citations excluded 10 studies due to study design, withdrawal and early termination. Abstracts were then screened for relevance and redundancy excluding an additional 17 studies. A total of 44 studies were fully assessed and 24 were excluded due to the study population, inconclusive adverse event data and lack of neurotoxicity adverse event data. A total of 20 studies met the inclusion criteria to be included in the meta-analysis.<sup>16–35</sup> The results include 5 studies for rilpivirine,<sup>16–20</sup> 14 studies for dolutegravir<sup>21–34</sup> and 1 study for dolutegravir/rilpivirine.<sup>35</sup>

The total number of represented patients was 10 988 with the majority being male. One study, Orrell *et al*, had an all-female population.<sup>26</sup> Out of the 20 studies, 8 used ART-experienced participants and 12 used ART-naïve participants (online supplemental table S1). The shortest duration of reported adverse drug events was 24 weeks by Trottier *et al* (n=1) and the longest was 164 weeks by NCT00543725 THRIVE trial (n=1). The



**Figure 1** Selection process for RCTs of dolutegravir, rilpivirine and dolutegravir/rilpivirine. Initially included 71 possible citations. We excluded 51 articles/RCTs due to not matching inclusion criteria. The final analysis included 20 articles/RCTs. ADE, adverse drug event; RCTs, randomised controlled trials.

average study Jadad score was 4. Eight studies used efavirenz as a comparator.

### Primary outcome: risk of neurotoxicities

#### Analysis RR of depression versus ARV comparators

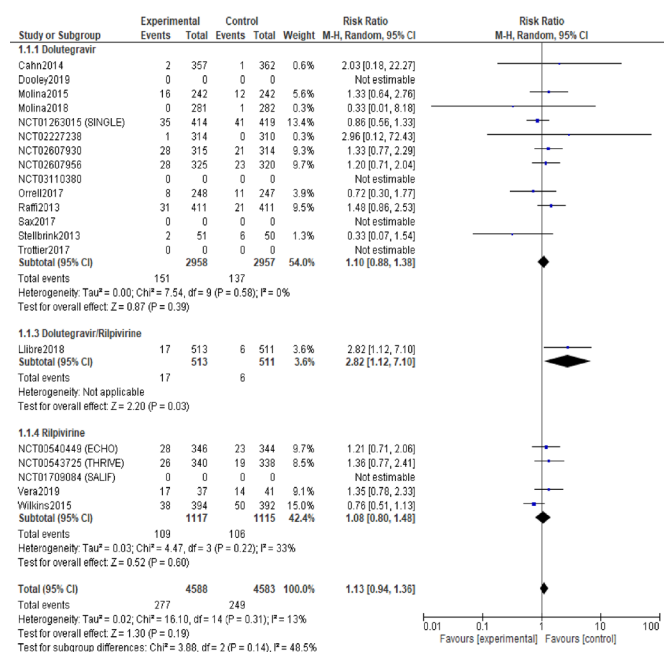
A total of 15 studies observed and reported incidences of depression and were included in the combined analysis (figure 2). However, five studies<sup>18 27 28 30 32</sup> did not evaluate the risk of depression. The RR of depression from the combined data of rilpivirine, dolutegravir and dolutegravir/rilpivirine against ARV comparators was not statistically significant (RR=1.13, 95% CI (0.94 to 1.36), p=0.19). Dolutegravir/rilpivirine had the highest RR (RR=2.82, 95% CI (1.12 to 7.10), p=0.03). The RR for dolutegravir (RR=1.10, 95% CI (0.88 to 1.38), p=0.39) and rilpivirine (RR=1.08, 95% CI (0.80 to 1.48), p=0.60) was not statistically significant.

#### Subanalysis RR of depression excluding efavirenz versus ARV comparators

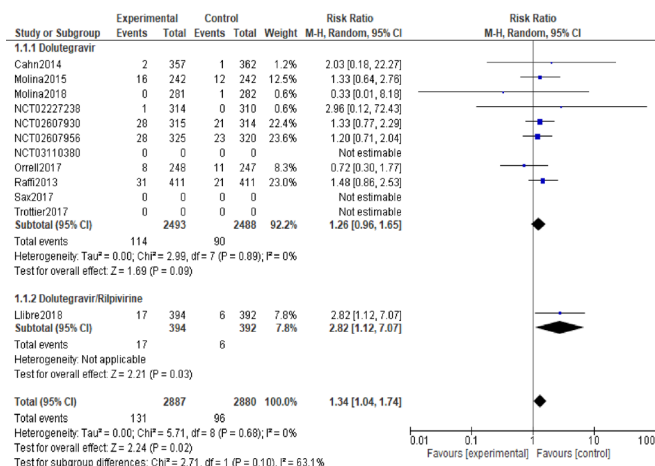
A total of 20 studies were included in the meta-analysis. A subanalysis excluding studies involving efavirenz was conducted. A total of eight studies were identified using efavirenz<sup>16–21 23 27</sup> as the comparator arm. Out of the 12 remaining studies, only 8 of them observed and reported incidences of depression (figure 3). When excluding efavirenz, the combined RR becomes statistically significant in the outcome of depression (RR=1.34, 95% CI (1.04 to 1.74), p=0.02). The RR for dolutegravir/rilpivirine did not change from 2.82; however, the 95% CI slightly shortened to 95% CI (1.12 to 7.07). The RR for dolutegravir changed to (RR=1.26, 95% CI (0.96 to 1.65), p=0.09).

#### Analysis RR of anxiety, insomnia, dizziness and suicidal behaviour versus ARV comparators

The total number of studies analysed for the other neurotoxicities were anxiety (n=13), insomnia (n=17), dizziness (n=15)



**Figure 2** Risk ratio of depression (ART comparators). Forest plot risk ratio estimates with a 95% CI of the association between depression risk and rilpivirine, dolutegravir or the combination of dolutegravir/rilpivirine administration. ART, antiretroviral therapy.



**Figure 3** Risk ratio of depression (ART comparators excluding efavirenz). Forest plot risk ratio estimates with a 95% CI of the association between depression risk and rilpivirine, dolutegravir or the combination of dolutegravir/rilpivirine administration excluding studies involving efavirenz. ART, antiretroviral therapy.

and suicidal behaviour (n=15) (table 1). The highest RR was in dizziness with dolutegravir/rilpivirine (RR=20.92, 95% CI (1.23 to 356.03), p=0.04). The lowest and significant RR was in dizziness with rilpivirine (RR=0.35, 95% CI (0.28 to 0.43), p<0.00001).

#### Subanalysis RR of anxiety, insomnia, dizziness and suicidal behaviour excluding efavirenz versus ARV comparators

There were no significant changes in anxiety, insomnia and suicidal behaviour that was observed when including efavirenz in the analysis. However, dizziness became not statistically significant due to its p value and 95% CI increasing when excluding efavirenz for dolutegravir and the combined analysis (RR=1.12, 95% CI (0.85 to 1.48), p=0.43) and (RR=1.23, 95% CI (0.94 to 1.62), p=0.14), respectively (table 2).

#### Secondary outcome: compare the risk against efavirenz-based therapies

There has not been a study comparing efavirenz against the combination of dolutegravir and rilpivirine. We can only analyse dolutegravir and rilpivirine individually against efavirenz. The only statistically significant neuropsychiatric adverse effect was dizziness. In all, dizziness RR was less than one group for dolutegravir (RR=0.28, 95% CI (0.21 to 0.38), p<0.00001), rilpivirine (RR=0.35, 95% CI (0.28 to 0.43), p<0.00001) and combined analysis (RR=0.33, 95% CI (0.28 to 0.39), p<0.00001). Efavirenz has a higher risk of causing dizziness than dolutegravir and rilpivirine. All other neurotoxicities were not statistically significant (table 3).

#### Discontinuation rate of included RCTs

Out of the 20 included studies, 12 reported discontinuation due to drug-related adverse effects. Only Libre *et al*, Molina *et al*, Orrell *et al* and Stellbrink *et al* provided reasons for discontinuation (table 4).

#### Comparing neuropsychiatric adverse effects with other adverse drug-related events reported

Depression was the most frequent neuropsychiatric adverse effect to occur while suicidal behaviour was the least. The most

**Table 1** Risk ratios of neurotoxicities including all RCTs

Adverse event	Drug(s)	Risk ratio	95% CI	P value	Studies included	I <sup>2</sup> %
Depression	Dolutegravir	1.1	0.88 to 1.38	0.39	10	0
	Dolutegravir/rilpivirine	2.82	1.12 to 7.10	0.03	1	N/A
	Rilpivirine	1.08	0.8 to 1.48	0.6	4	33
	Combined	1.13	0.94 to 1.36	0.19	15	13
Anxiety	Dolutegravir	0.94	0.74 to 1.20	0.61	9	1
	Dolutegravir/rilpivirine	1.37	0.56 to 3.38	0.49	1	N/A
	Rilpivirine	0.68	0.35 to 1.34	0.27	3	75
Insomnia	Combined	0.88	0.69 to 1.13	0.32	13	34
	Dolutegravir	1.18	0.93 to 1.48	0.17	12	24
	Dolutegravir/rilpivirine	1.69	0.78 to 3.65	0.18	1	N/A
	Rilpivirine	1	0.71 to 1.41	1	4	62
Dizziness	Combined	1.12	1 to 1.41	0.24	17	39
	Dolutegravir	0.57	0.43 to 0.69	<0.00001	9	83
	Dolutegravir/rilpivirine	20.92	1.23 to 356.03	0.04	1	N/A
	Rilpivirine	0.35	0.28 to 0.43	<0.00001	5	0
Suicidal behaviour	Combined	0.47	0.41 to 0.53	<0.00001	15	79
	Dolutegravir	0.93	0.56 to 1.57	0.8	11	0
	Dolutegravir/rilpivirine	2.99	0.31 to 28.63	0.34	1	N/A
	Rilpivirine	1.32	0.36 to 4.8	0.67	3	17
Suicidal behaviour	Combined	1.02	0.64 to 1.62	0.93	15	0

N/A, not applicable; RCTs, randomised controlled trials.

common other drug-related adverse effects reported were diarrhoea, nasopharyngitis, upper respiratory tract infection, headache, nausea and vomiting (online supplemental table S2).

## DISCUSSION

The US Department of Health and Human Services HIV/AIDS guidelines recommend an INSTI-based regimen, usually combined with two NRTIs, as a first-line treatment option in most individuals living with HIV.<sup>5</sup> A two-drug regimen containing dolutegravir/lamivudine is also considered a first-line option for patients without HIV RNA >500 000 copies/mL, hepatitis B coinfection or in whom treatment will be started prior to the results of HIV genotypic resistance testing.<sup>5</sup> It is important to understand the possible side-effects of dolutegravir due to its standing as a component included in the majority of first-line treatment options.

The mechanism for which dolutegravir induces neurotoxicity is not clearly defined. The neurotoxic adverse effects are postulated to be due to dolutegravir's ability to penetrate the blood-brain barrier through passive diffusion.<sup>36 37</sup> Other data propose dolutegravir may alter the tight junctions of the blood-brain barrier and cause neuroinflammation.<sup>6</sup> Regardless of the mechanism, dolutegravir has shown to accumulate in cerebral spinal fluid and based on animal studies, it is proposed that dolutegravir accumulation in the CNS may cause oxidative stress altering neuronal homeostasis.<sup>36 38</sup> A study by Yagura *et al*<sup>39</sup> concluded dolutegravir plasma concentrations should be monitored because an increase in plasma concentration of dolutegravir was positively correlated to an increase of neurotoxic side-effects among their patients.<sup>39</sup> CNS side-effects were more observed in higher dolutegravir trough concentrations with a median trough of 1.34 µg/mL.<sup>39</sup> Monitoring dolutegravir

**Table 2** Risk ratios of neurotoxicities excluding efavirenz RCTs

Adverse event	Drug(s)	Risk ratio	95% CI	P value	Studies included	I <sup>2</sup> %
Depression	Dolutegravir	1.26	0.96 to 1.65	0.09	8	0
	Dolutegravir/rilpivirine	2.82	1.12 to 7.07	0.02	1	N/A
	Combined	1.34	1.04 to 1.74	0.02	9	0
Anxiety	Dolutegravir	0.99	0.72 to 1.36	0.95	7	12
	Dolutegravir/rilpivirine	1.37	0.56 to 3.38	0.49	1	N/A
	Combined	1.02	0.77 to 1.35	0.91	8	4
Insomnia	Dolutegravir	1.17	0.88 to 1.54	0.28	9	26
	Dolutegravir/rilpivirine	1.69	0.78 to 3.66	0.18	1	N/A
	Combined	1.2	0.93 to 1.56	0.16	10	23
Dizziness	Dolutegravir	1.12	0.85 to 1.48	0.43	6	0
	Dolutegravir/rilpivirine	20.92	1.23 to 356.03	0.04	1	N/A
	Combined	1.23	0.94 to 1.62	0.14	7	22
Suicidal behaviour	Dolutegravir	1.01	0.55 to 1.86	0.98	8	5
	Dolutegravir/rilpivirine	2.99	0.31 to 28.63	0.34	1	N/A
	Combined	1.08	0.6 to 1.94	0.8	9	3

N/A, not applicable; RCTs, randomised controlled trials.

**Table 3** Risk ratios of neurotoxicities including only efavirenz RCTs

Adverse event	Drug(s)	Risk ratio	95% CI	P value	Studies included	I <sup>2</sup> %
Depression	Dolutegravir	0.86	0.56 to 1.33	0.51	1	N/A
	Rilpivirine	1.08	0.80 to 1.48	0.22	4	33
	Combined	1.02	0.8 to 1.48	0.88	5	21
Anxiety	Dolutegravir	0.9	0.58 to 1.41	0.66	1	N/A
	Rilpivirine	0.68	0.35 to 1.34	0.27	3	75
	Combined	0.75	0.48 to 1.18	0.21	4	64
Insomnia	Dolutegravir	1.07	0.38 to 2.99	0.89	2	45
	Rilpivirine	1	0.71 to 1.41	1	4	62
	Combined	1.06	0.78 to 1.44	0.71	6	62
Dizziness	Dolutegravir	0.28	0.21 to 0.38	<0.00001	2	0
	Rilpivirine	0.35	0.28 to 0.43	<0.00001	5	0
	Combined	0.33	0.28 to 0.39	<0.00001	7	15.3
Suicidal behaviour	Dolutegravir	0.83	0.26 to 2.61	0.74	2	0
	Rilpivirine	1.32	0.36 to 4.8	0.67	3	17
	Combined	1	0.45 to 2.22	0.6	5	0

N/A, not applicable; RCTs, randomised controlled trials.

trough concentrations around 1.34 µg/mL could potentially aid and reduce neurotoxic side-effects. Another postulated toxicity effect is due to a potential drug–drug interaction at breast cancer resistance protein (BCRP). BCRP is a major efflux transporter protein that removes drugs from inside cells.<sup>40</sup> Dolutegravir is a substrate of BCRP and rilpivirine is an inhibitor of BCRP.<sup>41–46</sup> Therefore, rilpivirine through BCRP inhibition may potentially increase the concentration of dolutegravir.<sup>40</sup> Further studies are needed to explore this interaction.

The meta-analysis demonstrated a synergistic effect on depressive symptoms for dolutegravir/rilpivirine (RR=2.82; 95% CI (1.12 to 7.10)) when compared with dolutegravir (RR=1.10; 95% CI (0.88 to 1.38)) and rilpivirine (RR=1.08; 95% CI (0.80

to 1.48)). There were two significant outcomes in the primary analysis under dizziness for dolutegravir and rilpivirine. No other significant values were observed in the other defined neurotoxicities when comparing against ARV comparators. A subanalysis was conducted to remove studies that contained efavirenz-based regimens. Efavirenz has been linked to abnormal dreams, insomnia, depression and suicidal ideation.<sup>14</sup> Due to efavirenz's side-effect profile, its frequent use has declined. It was theorised that since efavirenz has well-documented reports of neurotoxicity, it may have skewed the analysis therefore prompting an additional subanalysis. There were a few changes observed in the RR analysis of depression. The combined drug analysis RR changed from (RR=1.13, 95% CI (0.94 to 1.36), p=0.19) to

**Table 4** Discontinuation rates of included RCTs

Study name	Drug observed and number of participants in study arm	Discontinuation due to an adverse event	Reason for discontinuation
Cahn <i>et al</i> <sup>25</sup>	Dolutegravir (n=357)	9/357 (3%)	N/A
Dooley <i>et al</i> <sup>27</sup>	Dolutegravir (n=69)	N/A	N/A
Llibre <i>et al</i> <sup>25</sup>	Dolutegravir/rilpivirine (n=513)	17/513 (3%)	Psychiatric disorders not specified
Molina <i>et al</i> <sup>33</sup>	Dolutegravir (n=242)	6/242 (3.3%)	N/A
Molina <i>et al</i> <sup>24</sup>	Dolutegravir (n=281)	2/281 (1%)	Included headache (n=1) and pruritus (n=1) in the dolutegravir group
NCT00543725 (THRIVE)	Rilpivirine (n=340)	8/340 (2.4%)	N/A
NCT00540449 (ECHO)	Rilpivirine (n=346)	6/346 (1.7%)	N/A
NCT01263015 (SINGLE)	Dolutegravir (n=414)	N/A	N/A
NCT01709084 (SALIF)	Rilpivirine (n=213)	N/A	N/A
NCT02227238	Dolutegravir (n=314)	N/A	N/A
NCT02607930	Dolutegravir (n=315)	N/A	N/A
NCT02607956	Dolutegravir (n=325)	N/A	N/A
NCT03110380	Dolutegravir (n=281)	N/A	N/A
Orrell <i>et al</i> <sup>26</sup>	Dolutegravir (n=248)	10/248 (4%)	Two participants discontinued dolutegravir due to drug hypersensitivity Other reasons for discontinuation were not given
Raffi <i>et al</i> <sup>22</sup>	Dolutegravir (n=411)	10/411 (2.4%)	N/A
Stellbrink <i>et al</i> <sup>21</sup>	Dolutegravir (n=51)	1/51 (2%)	Lipoatrophy
Trottier <i>et al</i> <sup>30</sup>	Dolutegravir (n=276)	11/276 (4%)	N/A
Vera <i>et al</i> <sup>17</sup>	Rilpivirine (n=37)	N/A	N/A
Wilkins <i>et al</i> <sup>16</sup>	Rilpivirine (n=394)	10/394 (2.5%)	N/A

N/A, not applicable; RCTs, randomised controlled trials.

(RR=1.34, 95% CI (1.04 to 1.74),  $p=0.02$ ). While the changes were statistically significant, it does not appear to be clinically relevant. Dolutegravir alone shared a similar trend with its RRs when excluding efavirenz changing from (RR=1.10, 95% CI (0.88 to 1.38)) to (RR=1.26, 95% CI (0.96 to 1.65),  $p=0.09$ ). The analysis and the subanalysis indicate that dolutegravir may contribute to the neurotoxic adverse effects along with rilpivirine. Practitioners should not only exercise caution when prescribing the combination of dolutegravir/rilpivirine to patients with a medical history of CNS abnormalities but any ART containing either dolutegravir or rilpivirine.

There were several limitations to this meta-analysis. The meta-analysis was not sufficiently powered due to using RCTs that were testing efficacy and not adverse drug-related events. Out of the 20 studies initially identified, only 15 reported adverse effects of depression relative to the meta-analysis' primary outcome. Dolutegravir/rilpivirine only had one RCT included. As of August 2020, there are two RCTs observing dolutegravir/rilpivirine use that are either in the recruiting phase or have been completed; however, the results are not currently available.<sup>47 48</sup>

## CONCLUSION

In this meta-analysis of 20 randomised trials, there was a synergistic risk of depression when dolutegravir was used in combination with rilpivirine. Despite the increase, the clinical significance is unknown and needs further study. Additionally, neuropsychiatric adverse effect risk appears similar between dolutegravir and rilpivirine ART when compared with efavirenz-based ART. The combination of dolutegravir and rilpivirine has not been directly compared with efavirenz and needs additional trials.

## Key messages

- ▶ Dolutegravir may contribute to the neuropsychiatric adverse effects of the combination of dolutegravir/rilpivirine used in HIV.
- ▶ The meta-analysis included 20 randomised controlled trials that observed neuropsychiatric adverse effects focusing on depression, anxiety, insomnia, dizziness and suicidal behaviour.
- ▶ The combination of dolutegravir/rilpivirine demonstrated a synergistic effect for depressive symptoms. Despite the increase, the clinical implications are not clear and need additional research. None of the other observed neuropsychiatric adverse effects were increased.

**Handling editor** Laith J Abu-Raddad

**Contributors** AAR developed the research question and methods section, and developed the search strategy. AAR and AVF selected eligible studies during the title/abstract screening and full-text evaluation. AAR and AVF extracted data from the included studies and appraised the quality of the evidence. JC, JET and JFM reviewed data extraction and appraisal of evidence. AAR and CH coordinated RevMan V.5.3 implementation. AAR entered extracted data into RevMan V.5.3 and interpreted/analysed the data. AVF, JC, JET and JFM double-checked data entry into RevMan V.5.3 and reviewed data interpretation. CH was involved in cases of dissent with respect to extracted data/evaluations, and participated in analysing and interpreting the data. AAR developed the draft of the manuscript. AVF, JC, JET, JFM and CH contributed to the final editing of the draft. AAR and JC coordinated contributions of the coauthors and compiled the final draft.

**Funding** The authors have not declared a specific grant for this research from any funding agency in the public, commercial or not-for-profit sectors.

**Competing interests** None declared.

**Patient consent for publication** Not required.

**Provenance and peer review** Not commissioned; externally peer reviewed.

**Supplemental material** This content has been supplied by the author(s). It has not been vetted by BMJ Publishing Group Limited (BMJ) and may not have been peer-reviewed. Any opinions or recommendations discussed are solely those of the author(s) and are not endorsed by BMJ. BMJ disclaims all liability and responsibility arising from any reliance placed on the content. Where the content includes any translated material, BMJ does not warrant the accuracy and reliability of the translations (including but not limited to local regulations, clinical guidelines, terminology, drug names and drug dosages), and is not responsible for any error and/or omissions arising from translation and adaptation or otherwise.

## ORCID iD

Anthony Allen Reeves <http://orcid.org/0000-0002-1739-948X>

## REFERENCES

- 1 Global HIV & AIDS statistics - 2020 fact sheet. *UNAIDS* (2020). Available: <https://www.unaids.org/en/resources/fact-sheet> [Accessed 30 Jul 2020].
- 2 Bezabhe WM, Chalmers L, Bereznicki LR, et al. Adherence to antiretroviral therapy and virologic failure: a meta-analysis. *Medicine* 2016;95:e3361.
- 3 Tyree GA, Vaida F, Zisook S, et al. Clinical correlates of depression chronicity among people living with HIV: what is the role of suicidal ideation? *J Affect Disord* 2019;258:163–71.
- 4 Treisman GJ, Soudry O. Neuropsychiatric effects of HIV antiviral medications. *Drug Saf* 2016;39:945–57.
- 5 Panel on Antiretroviral Guidelines for Adults and Adolescents. Guidelines for the Use of Antiretroviral Agents in Adults and Adolescents with HIV. *Department of Health and Human Services*. Available: <http://aidsinfo.nih.gov/contentfiles/lvguidelines/AdultandAdolescentGL.pdf> [Accessed 1 Aug 2020].
- 6 Ma Q, Schifitto G, Venuto C, et al. Effect of dolutegravir and sertraline on the blood brain barrier (BBB). *J Neuroimmune Pharmacol* 2020;15:7–9.
- 7 Tivicay (dolutegravir) [prescribing information]. Research Triangle Park, NC: ViiV Healthcare 2020.
- 8 Edurant (rilpivirine) [prescribing information]. Titusville, NJ: Janssen Therapeutics 2019.
- 9 Juluca (dolutegravir/rilpivirine) [prescribing information]. Research Triangle Park, NJ: ViiV Healthcare 2019.
- 10 Ryan R, Dayaram YK, Schaible D, et al. Outcomes in older versus younger patients over 96 weeks in HIV-1-infected patients treated with rilpivirine or efavirenz in echo and thrive. *Curr HIV Res* 2013;11:570–5.
- 11 HIV/AIDS Glossary Backbone Definition. National Institutes of health, 2020. Available: <https://aidsinfo.nih.gov/understanding-hiv-aids/glossary/4595/backbone> [Accessed 16 Apr 2020].
- 12 Jadad AR, Moore RA, Carroll D, et al. Assessing the quality of reports of randomized clinical trials: is blinding necessary? *Control Clin Trials* 1996;17:1–12.
- 13 Seden K, Kiiza D, Laker E, et al. High prevalence and long duration of nervous system and psychiatric adverse drug reactions in Ugandan patients taking efavirenz 600mg daily. *J Antimicrob Chemother* 2018;73:3158–61.
- 14 Sustiva (efavirenz) [prescribing information]. Princeton, NJ: Bristol Myers Squibb 2019.
- 15 Nordic Cochrane Centre. *Review manager 5 (RevMan 5). version 5.3*. Copenhagen: Nordic Cochrane Centre, The Cochrane Collaboration, 2014.
- 16 Wilkins EL, Cohen CJ, Trottier B, et al. Patient-Reported outcomes in the single-tablet regimen (StAR) trial of rilpivirine/emtricitabine/tenofovir disoproxil fumarate versus efavirenz/emtricitabine/tenofovir disoproxil fumarate in antiretroviral treatment-naïve adults infected with HIV-1 through 48 weeks of treatment. *AIDS Care* 2016;28:401–8.
- 17 Vera JH, Bracchi M, Alagaratnam J, et al. Improved central nervous system symptoms in people with HIV without objective neuropsychiatric complaints switching from efavirenz to rilpivirine containing cART. *Brain Sci* 2019;9:195.
- 18 ClinicalTrials.gov [Internet]. Bethesda (MD): National library of medicine (US). 2000 Feb 29 -. identifier NCT01709084, a clinical trial comparing the efficacy of tenofovir disoproxil Fumarate/Emtricitabine/Rilpivirine (TDF/FTC/RPV) versus TDF/FTC/Efavirenz (TDF/FTC/EFV) in patients with undetectable plasma HIV-1 RNA on current first-line treatment (SALIF); 2012 October 17. Available: <https://clinicaltrials.gov/ct2/show/study/NCT01709084?term=rilpivirine&rank=4> [Accessed 17 Apr 2020].
- 19 ClinicalTrials.gov [Internet]. Bethesda (MD): National library of medicine (US). 2000 Feb 29 -. identifier NCT00540449, a clinical trial in treatment naïve HIV-1 patients comparing TMC278 to efavirenz in combination with tenofovir + emtricitabine. (echo); 2007 October 8. Available: <https://clinicaltrials.gov/ct2/show/study/NCT00540449?term=rilpivirine&rank=1> [Accessed 17 Apr 2020].
- 20 ClinicalTrials.gov [Internet]. Bethesda (MD): National library of medicine (US). 2000 Feb 29 -. identifier NCT00543725, TMC278-TIDP6-C215: a clinical trial in treatment naïve HIV-subjects patients comparing TMC278 to efavirenz in combination with 2 nucleoside/nucleotide reverse transcriptase inhibitors (thrive); 2007 October 15. Available: <https://clinicaltrials.gov/ct2/show/study/NCT00543725> [Accessed 17 Apr 2020].
- 21 Stellbrink H-J, Reyes J, Lazzarin A, et al. Dolutegravir in antiretroviral-naïve adults with HIV-1: 96-week results from a randomized dose-ranging study. *AIDS* 2013;27:1771–8.

- 22 Raffi F, Jaeger H, Quiros-Roldan E, *et al.* Once-Daily dolutegravir versus twice-daily raltegravir in antiretroviral-naïve adults with HIV-1 infection (SPRING-2 study): 96 week results from a randomised, double-blind, non-inferiority trial. *Lancet Infect Dis* 2013;13:927–35.
- 23 A Trial Comparing GSK1349572 50mg Plus Abacavir/Lamivudine Once Daily to Atripla (Also Called The SINGLE Trial) - Full Text View. Full Text View - ClinicalTrials.gov. Available: <https://clinicaltrials.gov/ct2/show/NCT01263015> [Accessed 27 Dec 2020].
- 24 Molina J-M, Clotet B, van Lunzen J, *et al.* Once-Daily dolutegravir versus darunavir plus ritonavir for treatment-naïve adults with HIV-1 infection (flamingo): 96 week results from a randomised, open-label, phase 3B study. *Lancet HIV* 2015;2:e127–36.
- 25 Cahn P, Pozniak AL, Mingrone H, *et al.* Dolutegravir versus raltegravir in antiretroviral-experienced, integrase-inhibitor-naïve adults with HIV: week 48 results from the randomised, double-blind, non-inferiority SAILING study. *Lancet* 2013;382:700–8.
- 26 Orrell C, Hagins DP, Belonosova E, *et al.* Fixed-Dose combination dolutegravir, abacavir, and lamivudine versus ritonavir-boosted atazanavir plus tenofovir disoproxil fumarate and emtricitabine in previously untreated women with HIV-1 infection (ARIA): week 48 results from a randomised, open-label, non-inferiority, phase 3B study. *Lancet HIV* 2017;4:e536–46.
- 27 Dooley KE, Kaplan R, Mwelase N. International study of patients with HIV on rifampicin ING Study Group. Dolutegravir-based antiretroviral therapy for patients coinfecting with tuberculosis and human immunodeficiency virus: a multicenter, Noncomparative, open-label, randomized trial. *Clin Infect Dis* 2020;70:549–56.
- 28 Sax PE, DeJesus E, Crofoot G, *et al.* Bicitegravir versus dolutegravir, each with emtricitabine and tenofovir alafenamide, for initial treatment of HIV-1 infection: a randomised, double-blind, phase 2 trial. *Lancet HIV* 2017;4:e154–60.
- 29 ClinicalTrials.gov [Internet]. Bethesda (MD): National library of medicine (US). 2000 Feb 29 -. identifier NCT02607956, safety and efficacy of Bicitegravir/Emtricitabine/Tenofovir Alafenamide versus dolutegravir + Emtricitabine/Tenofovir Alafenamide in HIV-1 infected, antiretroviral treatment-naïve adults; 2015 November 18. Available: <https://clinicaltrials.gov/ct2/show/study/NCT02607956?term=dolutegravir&rslt=With&type=Intr&age=12&draw=2&rank=18> [Accessed 17 Apr 2020].
- 30 Trottier B, Lake JE, Logue K, *et al.* Dolutegravir/abacavir/lamivudine versus current art in virally suppressed patients (STRIVING): a 48-week, randomized, non-inferiority, open-label, phase IIIB study. *Antivir Ther* 2017;22:295–305.
- 31 ClinicalTrials.gov [Internet]. Bethesda (MD): National library of medicine (US). 2000 Feb 29 -. identifier NCT02227238; comparative efficacy and safety study of dolutegravir and Lopinavir/Ritonavir in second-line treatment; 2014 August 28. Available: <https://clinicaltrials.gov/ct2/show/NCT02227238> [Accessed 17 Apr 2020].
- 32 ClinicalTrials.gov [Internet]. Bethesda (MD): National library of medicine (US). 2000 Feb 29 -. identifier NCT03110380; switching to a fixed dose combination of Bicitegravir/Emtricitabine/Tenofovir Alafenamide (B/F/TAF) in HIV-1 infected adults who are virologically suppressed; 2017 April 12. Available: <https://clinicaltrials.gov/ct2/show/NCT03110380> [Accessed 17 Apr 2020].
- 33 Molina J-M, Ward D, Brar I, *et al.* Switching to fixed-dose bicitegravir, emtricitabine, and tenofovir alafenamide from dolutegravir plus abacavir and lamivudine in virologically suppressed adults with HIV-1: 48 week results of a randomised, double-blind, multicentre, active-controlled, phase 3, non-inferiority trial. *Lancet HIV* 2018;5:e357–65.
- 34 ClinicalTrials.gov [Internet]. Bethesda (MD): National library of medicine (US). 2000 Feb 29 -. identifier NCT02607930; safety and efficacy of Bicitegravir/Emtricitabine/Tenofovir Alafenamide versus Abacavir/Dolutegravir/Lamivudine in HIV-1 infected, antiretroviral treatment-naïve adults; 2015 November 18. Available: <https://clinicaltrials.gov/ct2/show/NCT02607930> [Accessed 17 Apr 2020].
- 35 Llibre JM, Hung C-C, Brinson C, *et al.* Efficacy, safety, and tolerability of dolutegravir-rilpivirine for the maintenance of virological suppression in adults with HIV-1: phase 3, randomised, non-inferiority SWORD-1 and SWORD-2 studies. *Lancet* 2018;391:839–49.
- 36 Letendre SL, Mills AM, Tashima KT, *et al.* ING116070: a study of the pharmacokinetics and antiviral activity of dolutegravir in cerebrospinal fluid in HIV-1-infected, antiretroviral therapy-naïve subjects. *Clin Infect Dis* 2014;59:1032–7.
- 37 Thibaut G, Valérie F, Anne-Marie T. Dolutegravir cerebrospinal fluid diffusion in HIV-1–Infected patients with central nervous system impairment. *Open Forum Infectious Diseases* 2019;6.
- 38 Montenegro-Burke JR, Woldstad CJ, Fang M, *et al.* Nanoformulated antiretroviral therapy attenuates brain metabolic oxidative stress. *Mol Neurobiol* 2019;56:2896–907.
- 39 Yagura H, Watanabe D, Nakauchi T. Effect of dolutegravir plasma concentration on central nervous system side effects. Seattle, Washington: Poster present at: Conference on retroviruses and opportunistic infections, 2017. [https://www.croiconference.org/abstract/effect-dolutegravir-plasma-concentration-central-nervous-system-side-effects/#:~:text=At%20least%20one%20of%20the,anxiety%20%5B3%20\(7%25\)%5D](https://www.croiconference.org/abstract/effect-dolutegravir-plasma-concentration-central-nervous-system-side-effects/#:~:text=At%20least%20one%20of%20the,anxiety%20%5B3%20(7%25)%5D)
- 40 Lee CA, O'Connor MA, Ritchie TK, *et al.* Breast cancer resistance protein (ABCG2) in clinical pharmacokinetics and drug interactions: practical recommendations for clinical victim and perpetrator drug-drug interaction study design. *Drug Metab Dispos* 2015;43:490–509.
- 41 Gutiérrez F, Fulladosa X, Barril G, *et al.* Renal tubular transporter-mediated interactions of HIV drugs: implications for patient management. *AIDS Rev* 2014;16::199–212.
- 42 Moss DM, Liptrott NJ, Curley P, *et al.* Rilpivirine inhibits drug transporters ABCB1, SLC22A1, and SLC22A2 in vitro. *Antimicrob Agents Chemother* 2013;57:5612–8.
- 43 Reznicek J, Ceckova M, Ptackova Z, *et al.* Mdr1 and BCRP transporter-mediated drug-drug interaction between rilpivirine and abacavir and effect on intestinal absorption. *Antimicrob Agents Chemother* 2017;61:e00837–17.
- 44 Reese MJ, Savina PM, Generaux GT, *et al.* In vitro investigations into the roles of drug transporters and metabolizing enzymes in the disposition and drug interactions of dolutegravir, a HIV integrase inhibitor. *Drug Metab Dispos* 2013;41:353–61.
- 45 Cottrell ML, Hadzic T, Kashuba ADM. Clinical pharmacokinetic, pharmacodynamic and drug-interaction profile of the integrase inhibitor dolutegravir. *Clin Pharmacokinet* 2013;52:981–94.
- 46 National Center for Biotechnology Information. PubChem compound summary for Cid 54726191, dolutegravir. Available: <https://pubchem.ncbi.nlm.nih.gov/compound/Dolutegravir> [Accessed 25 Dec 2020].
- 47 ClinicalTrials.gov [Internet]. Bethesda (MD): National Library of Medicine (US). 2000 Feb 29 -. Identifier NCT03518060, Dolutegravir/Rilpivirine, Antiretroviral Efficacy Study Using Real-world Data in Subjects With Human Immunodeficiency Virus (HIV)-1 (JUNGLE); 2018 May 8. Available: <https://clinicaltrials.gov/ct2/show/NCT03518060> [Accessed 17 Apr 2020].
- 48 ClinicalTrials.gov [Internet]. Bethesda (MD): National Library of Medicine (US). 2000 Feb 29 -. Identifier NCT04019873, 'COMBINE-2': Real-world Evidence for Effectiveness of Two Drug Regimen, Antiretroviral Therapy With Integrase Inhibitors Plus a Reverse Transcriptase Inhibitor; 2019 July 15. Available: <https://clinicaltrials.gov/ct2/show/NCT04019873> [Accessed 17 Apr 2020].

Study name	N	Population (treatment naïve or experienced)	Duration of reported ADEs (weeks)	Drug studied	Comparator	Dose (mg/day)	Dose comparat or (mg/day)	Sex (male %)	Jadad score
<b>Cahn, et al., 2014*</b>	719	Experienced	48	dolutegravir	raltegravir	50	800	68	5
<b>Dooley, et al., 2019*</b>	113	Naïve	52	dolutegravir	efavirenz	50	600	59	3
<b>Llibre et al., 2018*</b>	102 4	Experienced	52	dolutegravir + rilpivirine	current ART regimen	dolutegra vir 50 mg + rilpivirin e 25 mg	varies	77	3
<b>Molina, et al., 2015*</b>	485	Naïve	96	dolutegravir	darunavir + ritonavir	50	darunavir 800 mg + ritonavir 100 mg	85	3
<b>Molina, et al., 2018*</b>	563	Experienced	48	dolutegravir	bictegravir	50	50	89	5
<b>NCT005437 25 (THRIVE)</b>	678	Naïve	164	rilpivirine	efavirenz	25	600	73	5



<b>NCT005404 49 (ECHO)</b>	690	Naïve	160	rilpivirine	efavirenz	25	600	79	5
<b>NCT012630 15 (SINGLE)</b>	833	Naïve	144	dolutegravir	efavirenz	50	600	84	5
<b>NCT017090 84 (SALIF)</b>	424	Experienced	48	rilpivirine	efavirenz	25	600	36	2
<b>NCT022272 38</b>	624	Experienced	52	dolutegravir	lopinavir + ritonavir	50	lopinavir 800 mg + ritonavir 200 mg	65	3
<b>NCT026079 30</b>	629	Naïve	144	dolutegravir	bictegravir	50	50	90	5
<b>NCT026079 56</b>	645	Naïve	144	dolutegravir	bictegravir	50	50	88	5
<b>NCT031103 80</b>	565	Experienced	48	dolutegravir	bictegravir	50	50	86	5
<b>Orrell, et al., 2017</b>	495	Naïve	48	dolutegravir	atazanavir + ritonavir	50	atazanavir 300 mg + ritonavir 100 mg	0	3
<b>Raffi, et al., 2013*</b>	822	Naïve	96	dolutegravir	raltegravir	50	800	86	5
<b>Sax, et al., 2017*</b>	98	Naïve	48	dolutegravir	bictegravir	50	75	96	5

<b>Stellbrink, et al., 2013*</b>	101	Naïve	96	dolutegravir	efavirenz	50	600	86	2
<b>Trottier, et al., 2017*</b>	553	Experienced	24	dolutegravir	current ART regimen	50	varies	86	3
<b>Vera, et al., 2019*</b>	41	Experienced	24	rilpivirine	efavirenz	25	600	92	1
<b>Wilkins, et al., 2015*</b>	786	Naïve	96	rilpivirine	efavirenz	25	600	93	3
<b>* clinical.gov site provided additional information not found in the study</b>									

**Table S1: Study characteristics**

Study name	Drug observed and number of participants in study arm	Other adverse effects that occurred $\geq 5\%$	Neuropsychiatric adverse effects reported*
<b>Cahn, et al., 2014</b>	dolutegravir (n=357)	diarrhea (20%), upper respiratory tract infection (11%), headache (9%), nausea (8%), cough (9%), influenza (7%), nasopharyngitis (6%), vomiting (6%), rash (5%), upper abdominal pain (5%)	depression (0.6%), suicidal behavior (1.7%)
<b>Dooley, et al., 2019</b>	dolutegravir (n=69)	headache (13%), arthralgia (10%), upper respiratory tract infection (7%), vomiting (7%)	depression (0.6%), dizziness (4.3%), insomnia (2.9%)
<b>Llibre et al., 2018</b>	dolutegravir/rilpivirine (n=513)	nasopharyngitis (10%), headache (8%), upper respiratory tract infection (5%), diarrhea (6%)	anxiety (2.1%), depression (3.3%), dizziness (1.9%), insomnia (3.3%), suicidal behavior (0.6%)
<b>Molina, et al., 2015</b>	dolutegravir (n=242)	diarrhea (18%), nausea (17%), headache (17%), nasopharyngitis (12%), cough (7%), pyrexia (7%), vomiting (6%), back pain (6%), fatigue (6%), rash (5%), bronchitis (5%), gastroenteritis (5%), pharyngitis (5%), abdominal pain (5%), constipation (5%)	anxiety (6.2%), depression (6.6%), dizziness (5.8%), insomnia (7.9%), suicidal behavior (1.7%)
<b>Molina, et al., 2018</b>	dolutegravir (n=281)	respiratory tract infection (10%), diarrhea (9%), nasopharyngitis (7%), headache (7%)	insomnia (5%), suicidal behavior (0.4%)
<b>NCT00543725 (THRIVE)</b>	rilpivirine (n=340)	nausea (17%), diarrhea (14%), vomiting (6.5%), fatigue (5.9%), nasopharyngitis (15%), upper respiratory tract infection (13%), bronchitis (9.1%), influenza (9.4%), pharyngitis (5.9%), anogenital warts (5%), sinusitis (5%), headache (18%), cough (9.7%), pharyngolaryngeal pain (6%)	depression (7.6%), dizziness (12.6%), insomnia (11.2%), suicidal behavior (0.3%)
<b>NCT00540449 (ECHO)</b>	rilpivirine (n=346)	nausea (13%), diarrhea (15%), fatigue (5.8%), upper respiratory tract infection (15%), nasopharyngitis (13%), influenza (11%), back pain (6.7%), headache (15%), cough (6.7%), rash (7.5%)	anxiety (2.7%), depression (8.1%), dizziness (8.1%), insomnia (10%), suicidal behavior (1.2%)
<b>NCT01263015 (SINGLE)</b>	dolutegravir (n=414)	diarrhea (23%), nausea (17%), vomiting (6.8%), fatigue (16%), pyrexia (6.5%), nasopharyngitis (21%), upper respiratory tract infection (17%), bronchitis (8%), sinusitis (7%), influenza (7.5%), back pain (8.9%), arthralgia (6.8%), pain in extremity (5.6%), anogenital warts (5.6%), cough (9.4%), oropharyngeal pain (7.7%), rash (5.3%)	anxiety (8%), depression (8.5%), dizziness (10%), insomnia (18%), suicidal behavior (1.2%)

<b>NCT01709084 (SALIF)</b>	rilpivirine (n=213)	upper respiratory tract infection (30%), urinary tract infection (14%), increased appetite (5.2%), arthralgia (8%), back pain (9.4%), cough (8.9%), pruritis (6.6%)	dizziness (3.3%)
<b>NCT02227238</b>	dolutegravir (n=314)	diarrhea (8.9%), upper respiratory tract infection (14%), headache (7.6%)	depression (0.3%), dizziness (2.9%), insomnia (2.5%), suicidal behavior (0.3%)
<b>NCT02607930</b>	dolutegravir (n=315)	abdominal pain (6.7%), constipation (5.4%), diarrhea (18%), nausea (24%), vomiting (7.6%), fatigue (12%), pyrexia (5.7%), seasonal allergy (5.1%), bronchitis (9.5%), gastroenteritis (7%), gonorrhoea (6.7%), nasopharyngitis (16.5%), pharyngitis (7%), sinusitis (7.3%), syphilis (16%), upper respiratory tract infection (19%), arthralgia (9.2%), back pain (12%), musculoskeletal pain (5.1%), anogenital warts (6%), cough (6.4%), rash (7.6%), oropharyngeal pain (11%)	anxiety (6.3%), depression (8.9%), dizziness (6%), insomnia (11.1%), suicidal behavior (1.3%)
<b>NCT02607956</b>	dolutegravir (n=325)	abdominal pain (5.9%), diarrhea (16%), nausea (13%), vomiting (6.2%), fatigue (11%), pyrexia (9.2%), bronchitis (8.3%), nasopharyngitis (19%), upper respiratory tract infection (16%), arthralgia (7.1%), back pain (12%), musculoskeletal pain (5.5%), headache (18%), cough (8.6%), oropharyngeal pain (5.5%), rash (7.1%)	anxiety (7.7%), depression (8.6%), dizziness (6%), insomnia (7.4%), suicidal behavior (0.6%)
<b>NCT03110380</b>	dolutegravir (n=281)	diarrhea (11%), nasopharyngitis (10%), upper respiratory tract infection (11%) arthralgia (6.1%), headache (8.2%), cough (5.7%)	insomnia (3.9%)
<b>Orrell, et al., 2017</b>	dolutegravir (n=248)	nausea (13%), headache (2%), diarrhea (5%)	anxiety (2%), depression (3.2%), dizziness (5.2%), insomnia (4%), suicidal behavior (1.6%)
<b>Raffi, et al., 2013</b>	dolutegravir (n=411)	nausea (15%), nasopharyngitis (13%), diarrhea (14%), and headache (14%)	anxiety (5.4%), depression (7.5%), dizziness (6.1%), insomnia (6.8%), suicidal behavior (1%)
<b>Stellbrink, et al., 2013</b>	dolutegravir (n=51)	nausea (55%), diarrhea (12%), headache (10%), fatigue (2%)	anxiety (3.9%), depression (3.9%), dizziness (5.9%), insomnia (5.9%)
<b>Trottier, et al., 2017</b>	dolutegravir (n=276)	urinary tract infection (8%), nausea (10%), fatigue (7%), diarrhea (6%), headache (5%), cough (5%)	insomnia (3.6%)

<b>Vera, et al., 2019</b>	rilpivirine (n=37)	headache (19%)	anxiety (41%), depression (46%), dizziness (14%), insomnia (51%),
<b>Wilkins, et al., 2015</b>	rilpivirine (n=394)	diarrhea (18%), nausea (17%), vomiting (5.1%), flatulence (6.1%), fatigue (11%), upper tract infection (15%), nasopharyngitis (8.4%), bronchitis (8.6%), sinusitis (7.1%), syphilis (6.6%), arthralgia (7.1%), back pain (5.1%), myalgia (5.1%), cough (9.6%), oropharyngeal pain (5.8%), rash (7.9%)	anxiety (7.1%), depression (9.6%), dizziness (6.9%), insomnia (11%), suicidal behavior (0.8%)

Footnote:

Neuropsychiatric side-effects definitions\*

- **Anxiety defined as:** anxiety, nervousness, panic attacks, panic reaction, and anxiety disorder
- **Depression defined as:** insomnia, restlessness, difficulty sleeping, initial insomnia, middle insomnia, and terminal insomnia
- **Dizziness defined as:** dizziness, lightheadedness, and dizziness postural
- **Insomnia defined as:** insomnia, restlessness, difficulty sleeping, initial insomnia, middle insomnia, and terminal insomnia
- **Suicidal behavior defined as:** suicide attempt, suicide ideation, suicidal behavior, and complete suicide

**Table S2: Comparing other adverse effects with neuropsychiatric adverse effects of dolutegravir, rilpivirine, or dolutegravir/rilpivirine**