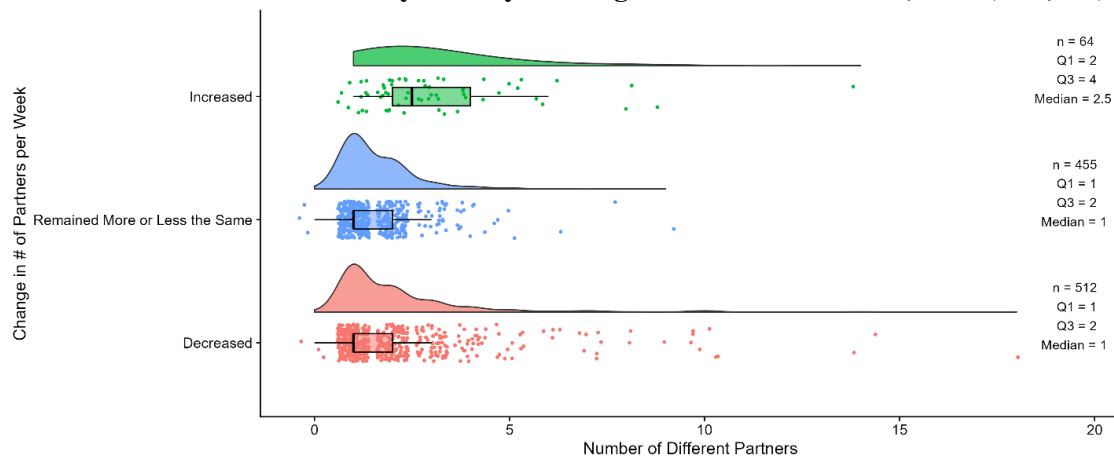


Supplemental Table S1: Crude Odds Ratios (OR) and 95% Confidence Intervals (95% CI) from Bivariate Models, Association between Selected Characteristics and Reported Changes in Risk Behaviours and Experiences of Violence, Men who have Sex with Men (MSM) enrolled in HIV Self-Test Study in Kisumu, Kiambu, and Mombasa Counties (Kenya, 2020)

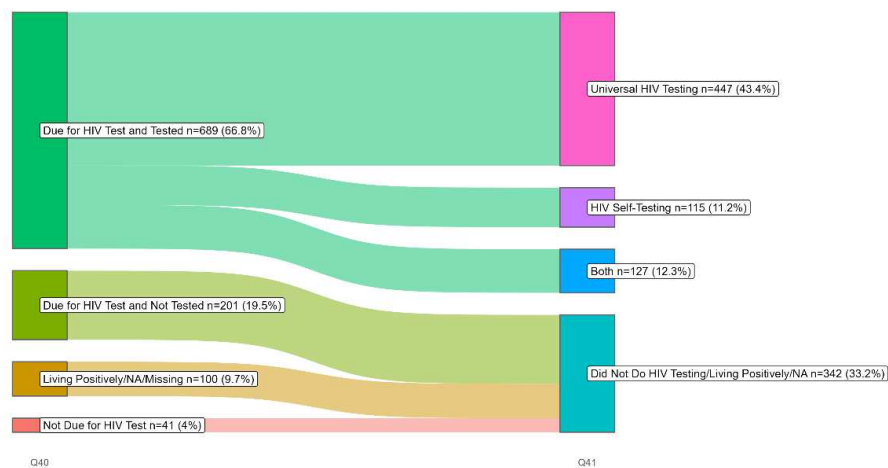
		Increase in Male Sexual Partners per Week	p-value	Increase in Alcohol Use	p-value	Increase in drug use	p-value	Increase/Sustained violence from police/authorities	p-value	Increase/Sustained violence from intimate partners	p-value
		OR (95% CI)		OR (95% CI)		OR (95% CI)		OR (95% CI)		OR (95% CI)	
Age Group											
	<21	0.89 (0.37, 2.12)	0.796	0.83 (0.40, 1.73)	0.626	1.08 (0.51, 2.32)	0.837	0.75 (0.36, 1.55)	0.435	0.60 (0.25, 1.42)	0.241
	21-24	0.92 (0.44, 1.95)	0.836	1.04 (0.57, 1.93)	0.890	1.13 (0.58, 2.20)	0.714	1.36 (0.75, 2.44)	0.308	0.89 (0.45, 1.78)	0.745
	25-29	0.78 (0.34, 1.77)	0.547	1.02 (0.53, 1.97)	0.960	0.90 (0.44, 1.84)	0.764	1.31 (0.70, 2.43)	0.399	0.76 (0.36, 1.63)	0.482
	30+	ref		ref		ref		ref		ref	
County											
	Kiambu	1.08 (0.56, 2.10)	0.821	2.60 (1.59, 4.26)	0.000	0.72 (0.45, 1.16)	0.177	0.07 (0.03, 0.14)	<0.0001	0.18 (0.08, 0.39)	<0.0001
	Kisumu	ref		ref		ref		ref		ref	
	Mombasa	1.63 (0.90, 2.95)	0.106	1.32 (0.77, 2.27)	0.306	0.39 (0.23, 0.65)	0.000	0.16 (0.10, 0.28)	<0.0001	0.46 (0.27, 0.80)	0.006
Highest Level of Education											
	Up to Primary	ref		ref		ref		ref		ref	
	Secondary	0.46 (0.23, 0.90)	0.023	2.77 (0.97, 7.88)	0.056	0.91 (0.46, 1.78)	0.780	1.35 (0.69, 2.68)	0.384	0.80 (0.37, 1.74)	0.576
	Post-Secondary	0.33 (0.17, 0.68)	0.002	3.83 (1.36, 10.77)	0.011	1.09 (0.56, 2.11)	0.807	1.30 (0.66, 2.58)	0.445	0.84 (0.39, 1.82)	0.661
Places where Male Partners Met											
	Both physical and virtual sites	ref		ref		ref		ref		ref	
	Physical sites	0.98 (0.45, 2.14)	0.968	0.98 (0.51, 1.86)	0.941	1.11 (0.59, 2.08)	0.745	0.98 (0.57, 1.70)	0.952	0.63 (0.28, 1.40)	0.253
	Virtual sites	0.95 (0.49, 1.83)	0.880	1.55 (0.97, 2.48)	0.069	1.29 (0.79, 2.10)	0.317	0.21 (0.10, 0.45)	<0.0001	0.34 (0.14, 0.79)	0.013
Sexual Position Preference											
	Predominantly receptive	ref		ref		ref		ref		ref	
	Predominantly insertive	0.63 (0.33, 1.21)	0.162	0.90 (0.53, 1.52)	0.681	1.04 (0.61, 1.79)	0.889	1.42 (0.88, 2.30)	0.156	1.10 (0.58, 2.09)	0.763

Both receptive and insertive	0.93 (0.48, 1.80)	0.832	1.09 (0.62, 1.90)	0.766	0.89 (0.49, 1.60)	0.686	0.81 (0.47, 1.42)	0.461	0.99 (0.49, 1.97)	0.968
Received money/gift in exchange of sex with man (ever)										
No	ref		ref		ref		ref		ref	
Yes	1.07 (0.64, 1.81)	0.787	0.79 (0.53, 1.19)	0.259	1.27 (0.83, 1.95)	0.273	2.22 (1.46, 3.36)	0.000	2.16 (1.24, 3.77)	0.007
Condom use with last male sexual partner										
No	ref		ref		ref		ref		ref	
Yes	1.23 (0.71, 2.13)	0.466	1.00 (0.66, 1.53)	0.994	1.40 (0.90, 2.17)	0.134	1.14 (0.77, 1.69)	0.514	0.90 (0.55, 1.48)	0.681
HIV status										
Negative	ref		ref		ref		ref		ref	
Positive	1.42 (0.79, 2.55)	0.246	1.14 (0.70, 1.86)	0.603	0.68 (0.39, 1.21)	0.189	0.27 (0.13, 0.54)	0.000	1.19 (0.67, 2.12)	0.552

Supplemental Figure 1: Number of Different Male Sex Partners in the Past Week, by Perceived Change in Partnership Patterns, Men who have Sex with Men (MSM) enrolled in HIV Self-Test Study in Kenya During First Wave of COVID, 2020 (N=1,031)



Supplemental Figure 2: HIV testing frequency and testing options used, Men who have Sex with Men (MSM) enrolled in HIV Self-Test Study in Kenya During First Wave of COVID, 2020 (N=1,031)



Supplemental Figure 3: Places where participants met sex partners, Men who have Sex with Men (MSM) enrolled in HIV Self-Test Study in Kenya During First Wave of COVID, 2020 (N=1,031)

