

Figure S1. Flow-chart

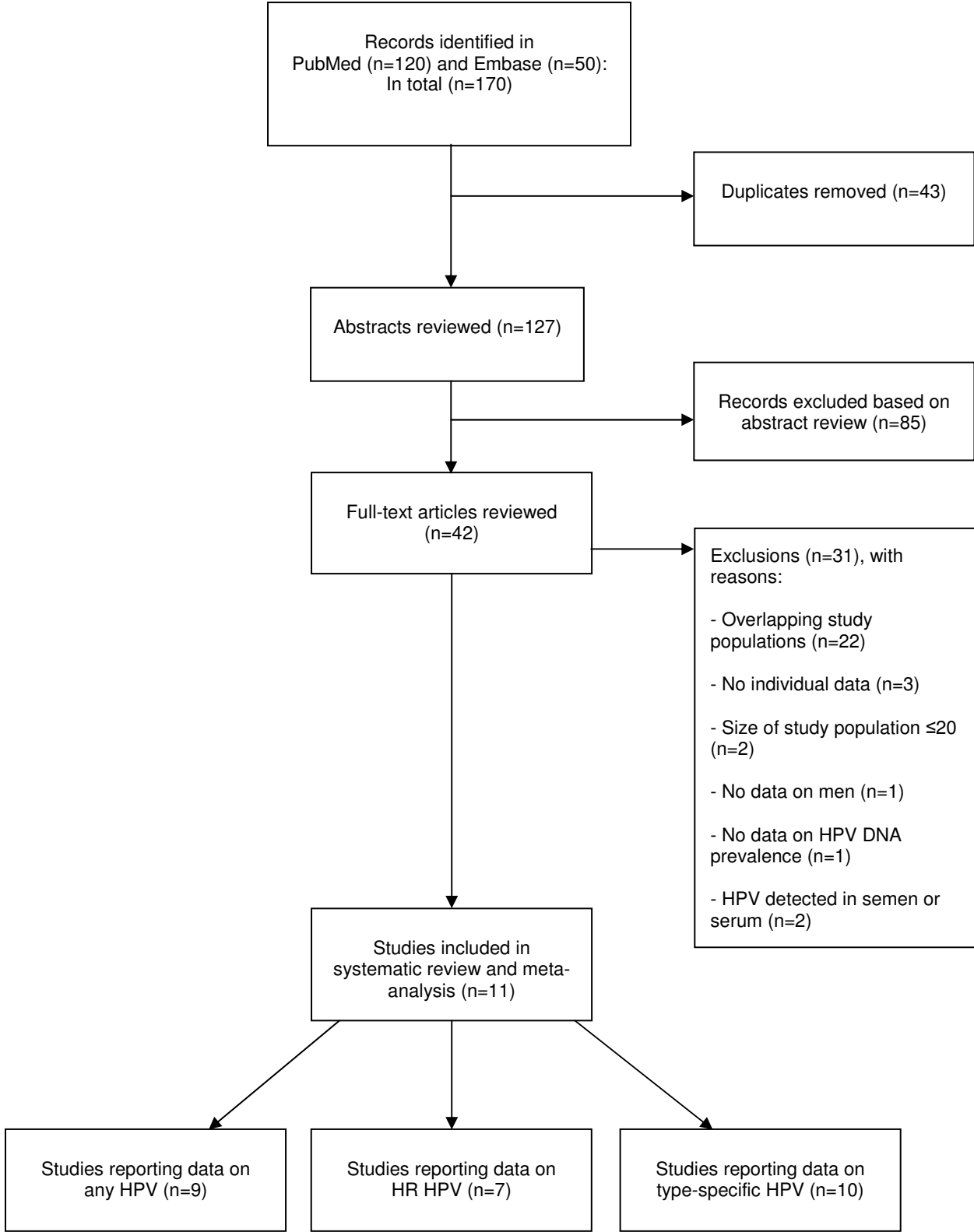


Table S1a. Data used in Figure 1a

Authors and year	Prevalence of any HPV							
	HIV-negative men				HIV-positive men			
	n	N	%	(95% CI)	n	N	%	(95% CI)
Ng'ayo et al. 2008	97	186	52.2	(44.7-59.5)	47	64	73.4	(60.7-83.4)
Mbulawa et al. 2010	153	313	49.0	(43.2-54.6)	122	158	77.0	(69.7-83.4)
Müller et al. 2010	69	106	65.1	(55.2-73.9)	94	104	90.4	(82.6-95.0)
Olesen et al. 2013	268	1343	20.0	(17.8-22.1)	49	140	35.0	(27.1-42.9)
Tobian et al. 2013	596	978	60.9	(57.8-64.0)	382	421	90.7	(87.5-93.3)
Vogt et al. 2013	17	31	54.8	(36.3-72.2)	3	3	100.0	(31.0-100.0)

Table S1b. Data used in Figure 1b

Authors and year	Prevalence of HR HPV							
	HIV-negative men				HIV-positive men			
	n	N	%	(95% CI)	n	N	%	(95% CI)
Veldhuijzen et al. 2012	34	153	22.2	(16.1-29.8)	10	13	76.9	(46.0-93.8)
Olesen et al. 2013	212	1343	15.8	(13.8-17.7)	36	140	25.7	(18.5-33.0)
Tobian et al. 2013	378	978	38.7	(35.6-41.8)	312	421	74.1	(69.6-78.2)

Table S2. Prevalence of any HPV and HR HPV in relation to circumcision status among men in sub-Saharan Africa¹

	Prevalence of HPV			
	Circumcised men		Uncircumcised men	
	n/N	(%)	n/N	(%)
Any HPV				
Ng'ayo et al. 2008	8/18	(44.4)	136/232	(58.6)
Müller et al. 2010	35/54	(64.8)	125/154	(81.2)
Smith et al. 2010	N/A	N/A	1382/2705	(51.1)
Tobian et al. 2013	N/A	N/A	978/1399	(69.9)
HR HPV				
Auvert et al. 2010	129/890	(14.5)	191/863	(22.1)
Tobian et al. 2013	N/A	N/A	690/1399	(49.3)

¹ N/A=not available

Table S3. Data used in Figure 2

Authors and year	Age group ²	HPV prevalence ¹			
		n	N	%	(95% CI)
Ng'ayo et al. 2008	18-20	22	36	61.1	(45.2-77.0)
	21-25	43	67	64.2	(52.7-75.7)
	26-30	32	51	62.7	(49.5-76.0)
	31-40	19	43	44.2	(29.3-59.0)
	>40	28	52	53.8	(40.3-67.4)
Mbulawa et al. 2010	<30	65	95	68.0	(59.1-77.8)
	30-39	115	185	62.0	(55.2-69.2)
	≥40	96	191	50.0	(43.2-57.4)
Müller et al. 2010	18-29	84	116	72.4	(64.3-80.6)
	30-39	62	74	83.8	(75.4-92.2)
	≥40	20	24	83.3	(68.4-98.2)
Smith et al. 2010 ³	<19	N/A	N/A	42.3	(37.2-47.4)
	19	N/A	N/A	46.8	(42.9-51.3)
	20	N/A	N/A	45.5	(41.7-50.0)
	21	N/A	N/A	50.0	(45.5-53.8)
	22	N/A	N/A	47.4	(42.3-52.6)
	23	N/A	N/A	46.2	(40.4-51.3)
	>23	N/A	N/A	44.9	(37.2-52.6)
Olesen et al. 2013	≤19	9	74	12.2	(4.7-19.6)
	20-24	44	254	17.3	(12.7-22.0)
	25-29	86	483	17.8	(14.4-21.2)
	30-34	79	336	23.5	(19.0-28.1)
	35-39	43	205	21.0	(15.4-26.6)
	40-49	57	245	23.3	(18.0-28.6)
	≥50	54	216	25.0	(19.2-30.8)
Tobian et al. 2013	15-19	30	96	31.3	(22.0-40.5)
	20-24	136	255	53.3	(47.2-59.5)
	25-29	184	362	50.8	(45.7-56.0)
	30-34	151	310	48.7	(43.2-54.3)
	≥35	189	376	50.3	(45.2-55.3)

¹ For Tobian et al. 2013 the age-specific prevalence of HR HPV is shown, whilst for all other studies the age-specific prevalence of any HPV is shown; ² When estimates were presented for an age-group, the mean of the age range was used for graphical presentation of data points; ³ Data read off Figure 1 in the paper by Smith et al. 2010