

Supplementary Material 6: Sensitivity analyses.

Figure 1: Prevalence of MG infection among PrEP users, estimated with Freeman-Tukey double arcsine as the transformation method for prevalence estimates.

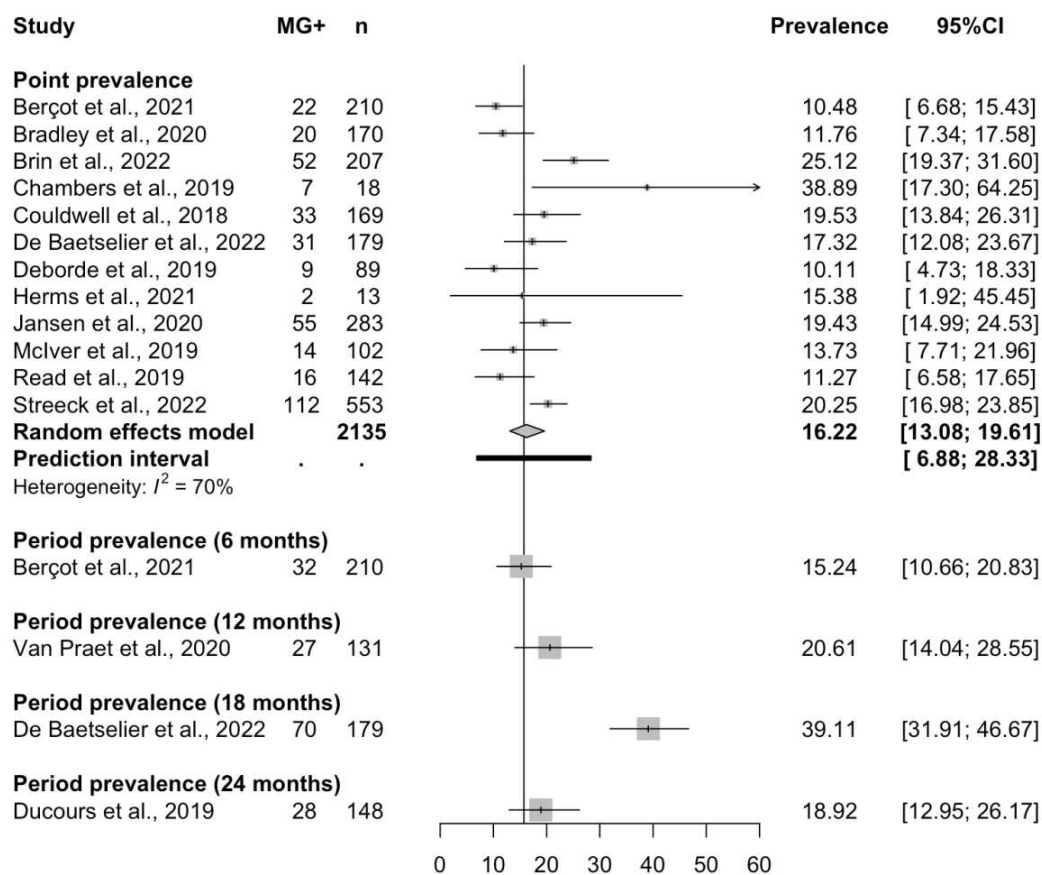


Figure 2: Prevalence of macrolide-resistant MG infection among PrEP users, estimated with Freeman-Tukey double arcsine as the transformation method for prevalence estimates.

